

Coast12 Pro Graphic drawing monitor

User Manual

Warnings:

1. Do not disassemble or modify the equipment. Failure to comply with this regulation may result in heat generation, fire, electric shock or other damage, and even personal injury. Disassembling the device will void the warranty.
2. Avoid damaging the USB cable and excessive bending of the cable. If the USB cable is damaged or broken and comes into contact with water or other liquids, it may cause malfunction, fire or electric shock.
3. Do not insert metal objects or foreign objects into the openings and ports of the device. Failure to comply with this regulation may result in malfunction, electric shock or other damage.
4. Please store the device out of the reach of children. Failure to comply with this regulation may cause children to accidentally swallow components or parts separated from the device.
5. Do not use alcohol, other organic solvents and neutral detergents to wipe the product, as this may cause discoloration or other damage.
6. The following damages are not covered by the manufacturer's warranty:
 - (a) Damage caused by large temperature fluctuations
 - (b) Damage caused by open flame
 - (c) Damage caused by falling
7. There is a precision electronic circuit in this equipment, which may cause malfunction due to unauthorized disassembly. This is not covered by the company's warranty, but the user can pay for repairs.
8. Please wipe the surface of the product with a soft cloth or a cleaning cloth.

User Manual Outline

I Product Overview

1. Coast12 Pro Product Diagrams

II Connection Methods

1. Coast12 Pro Connection Methods
2. Computer System Requirements

III Install Drive Programs

1. Installation Notes
2. Windows
3. Mac

IV Introduction to the Driven Page

1. Windows
2. Mac

V Remove Drive Programs

1. Windows
2. Mac

VI Frequently Asked Questions and Solutions

I Product Overview

1.Coast12 Pro Product Diagrams

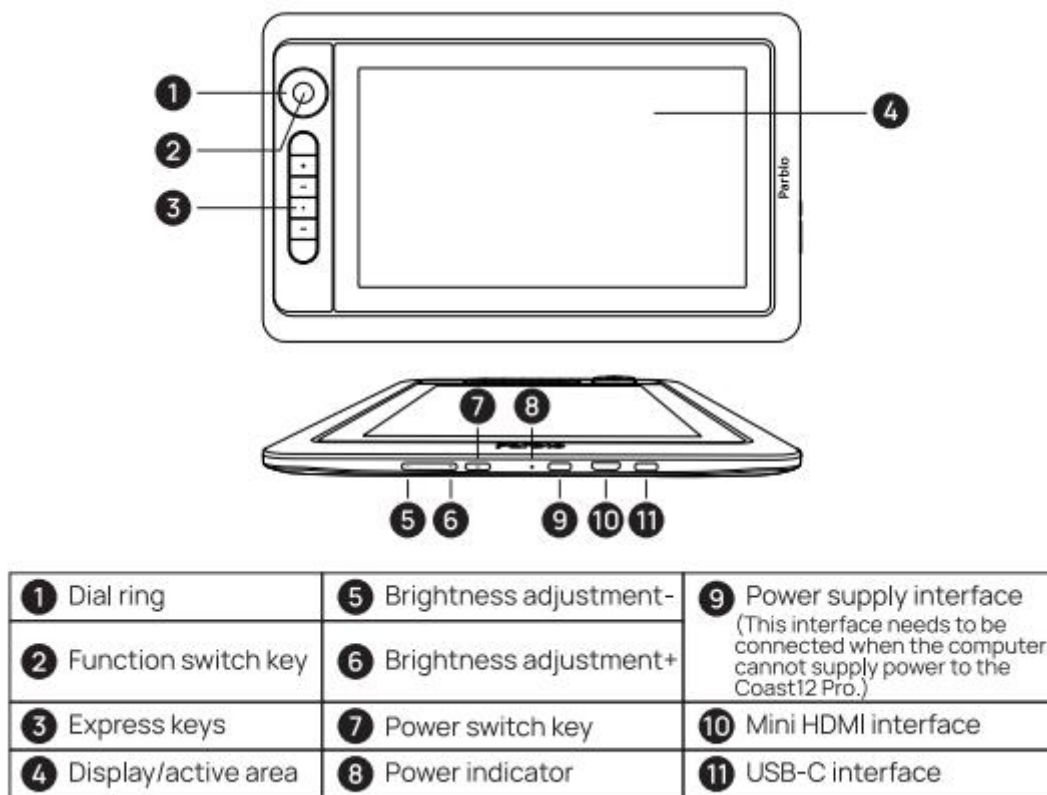


Figure 1-1 Diagrams

- (1) Mechanical rotation
- (2) Rotation switch key (long press for 3s to turn on the UI key)
- (3) Shortcut key
- (4) Display/working area
- (5) Brightness –
- (6) Brightness +
- (7) Power Switch
- (8) Indicator (the red light indicates that there is no signal input, and the green light shows a normal display)
- (9) Power interface (Connect to the interface extra if the graphic drawing monitor can't be insufficiently powered by your computer)
- (10) Mini HDMI port
- (11) USB-C data transmission port

II Connection Methods

How to Connect the Coast12 Pro Graphic drawing monitor to Your Computer:

The following 2 methods are available, and you can make a decision according to the port type of your computer.

Method 1: Connect the crooked port of the USB cable ② and HDMI cable ① to the graphic drawing monitor, and insert the straight port into your computer;

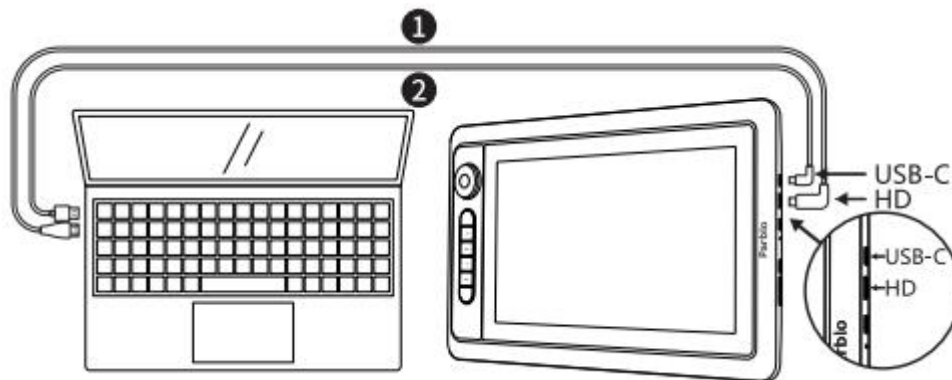


Figure 2-1 Connection Method 1

The graphic drawing monitor requires external power supply if it can't be sufficiently powered by your computer. At this

time, Android Type-C cable can be used to be connected to the power port of the graphic drawing monitor (⚡);

Method 2: Connect the graphic drawing monitor to your computer via full-featured USB-C cable (with 2 heads) (Suitable for partial Apple computers with Thunderbolt™3 and above protocols, and some windows computers with full-featured USB Type-C ports);

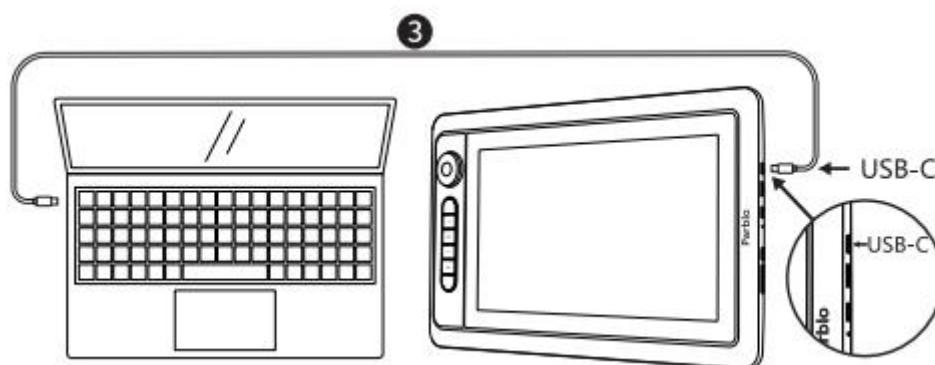


Figure 2-2 Connection Method 2

III Install Drive Programs

Support the following operating systems:

Windows OS 10, 8

Mac OS 10.11 and more advanced systems

Notes:

- (1) Please momentarily turn off antivirus software and firewall on computer prior to installation;
- (2) Turn off all software such as Photoshop, AI and OneNote;
- (3) If the computer has been installed with other pen tablet or pen display drivers, please uninstall the relevant drivers first, restart the computer, and then install the Coast12 Pro driver;
- (4) You can download the latest version of the driver from Parblo official website (www.parblo.com). After downloading to your computer, please unzip it and open the folder, and click the ".exe" or ".pkg" program to install it;
- (5) The maximum display resolution ratio of Coast12 Pro tablet is 1920x1080P.

Windows

- 1, Connect the crooked port of the USB cable ② and HDMI cable ① to the graphic drawing monitor, and insert the straight port into your computer; The computer desktop will show on the graphic drawing monitor after a successful connection;
2. Go to Parblo official website (www.parblo.com) to download the latest version of the driver and click on the ".exe"



program to install it;


- 3, The green Parblo icon  can be found on Taskbar in the lower-right corner of the screen after a successful installation. Please repeat the step 2 if you fail to find the small icon;
- 4, In the "Control Panel"->"System"->"Display" setting window, set the "Change the size of text, applications, etc." of the Coast12 Pro pen display to 100%;



Figure 3-1 Display Settings

- 5, In the multi-monitor settings of "Control Panel"->"System"->"Display" settings, the Coast12 Pro pen display can be set to "Copy Mode" or "Extended Mode";

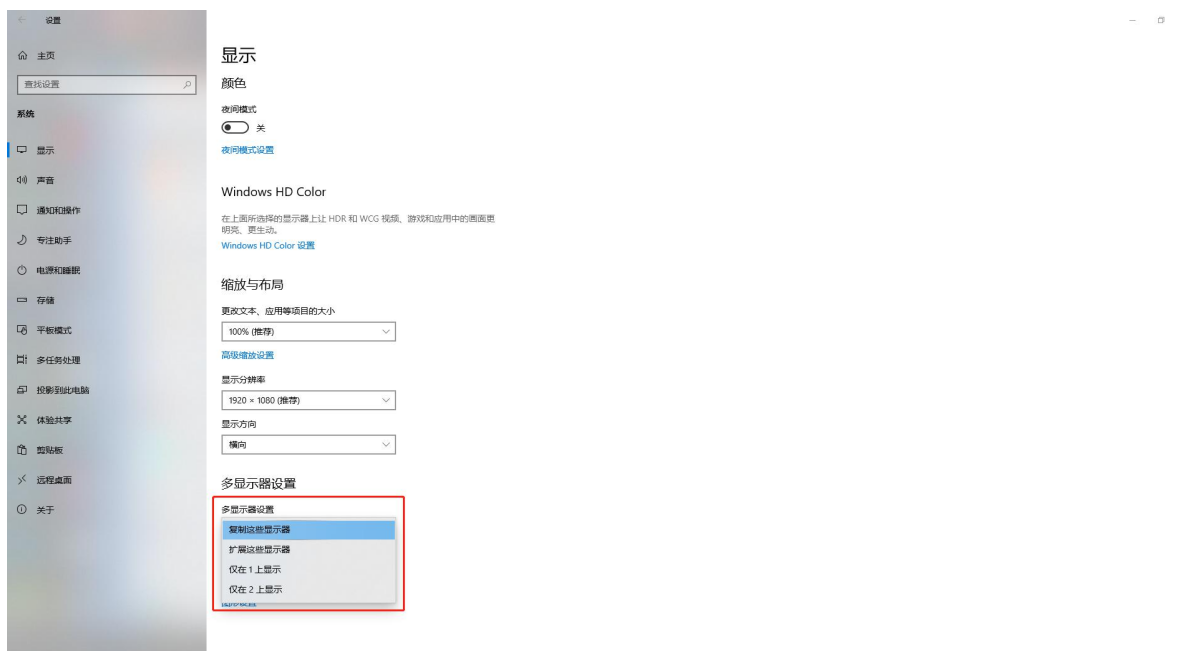


Figure 3-2 Mode Settings

6, In case of expansion mode, please set the resolution ratio of Coast12 Pro to be 1920x1080, and set the handwriting area to be Coast12 Pro graphic drawing monitor in the driver settings interface;

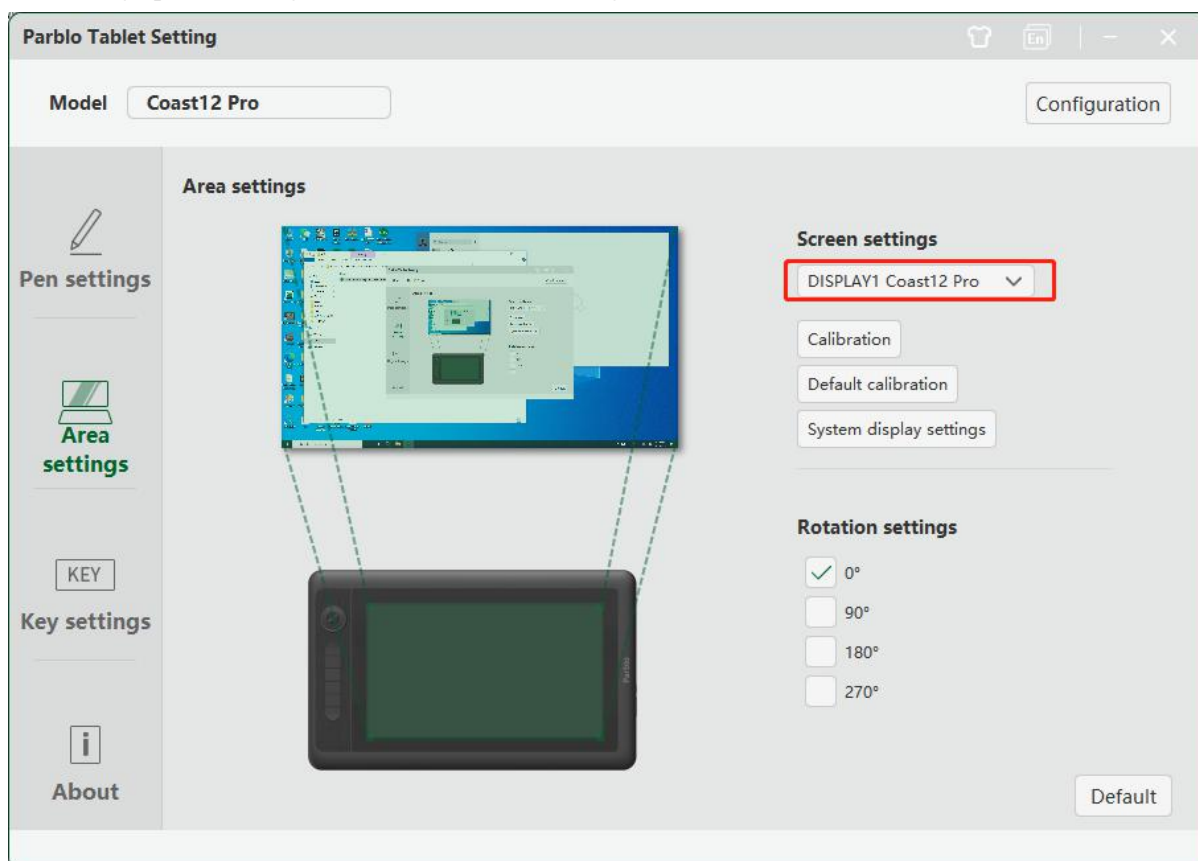


Figure 3-3 Display Mapping

Mac

- 1, Connect the crooked port of the USB cable ② and HDMI cable ① to the graphic drawing monitor, and insert the straight port into your computer; The computer desktop will show on the graphic drawing monitor after a successful connection (USB-C cable ③ with double heads can be used to connect to computers that support Thunderbolt™3);
- 2, Download the latest drive program on the official website of Parblo (www.parblo.com), then click “.pkg” to download

after the file is decompressed;

3, You can find the Parblo icon in the Launchpad after a successful installation;

4, When the driver is opened for the first time, the "Authorization Setting Instructions" will pop up. If your system is version 10.14 and above, you need to follow the documentation instructions for setting operations; if your system is version 10.14 or below, you don't need to set and close the document;

5, Open "System Preferences—Display" menu, and set the resolution ratio to be "Display Default" in the display window;

6, Go to windows arranged below the "System Preferences—Display" interface and you can check "Mirror Monitor". If you want to check "Mirror Monitor", please set the resolution ratio of all displays to be the same;

7, If you intend to turn off the "Mirror Monitor", please set the resolution ratio of Coast12 Pro to be 1920x1080, and select "Coast12 Pro" as the screen mapping in the drive interface.

IV Introduction to Drive Functions

Windows



Find the Parblo icon on the table, and double click to open the drive page of the graphic drawing monitor.



You can also find the Parblo icon on Taskbar in the lower-right corner of the screen, and click to open;

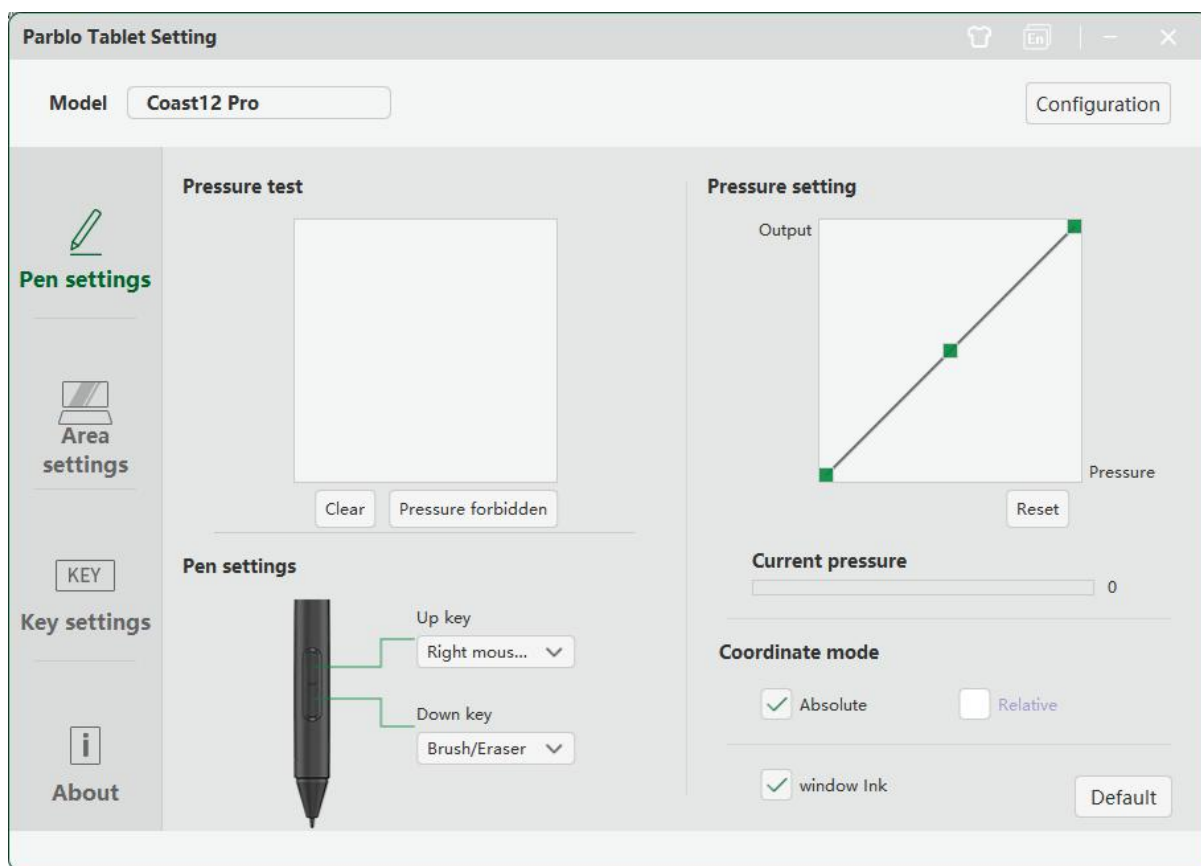


Figure 4-1 Windows Drive Interface

1. Pen Settings Interface

1.1 Pressure Testing Area

Test whether there is pressure change during drawing in the area.

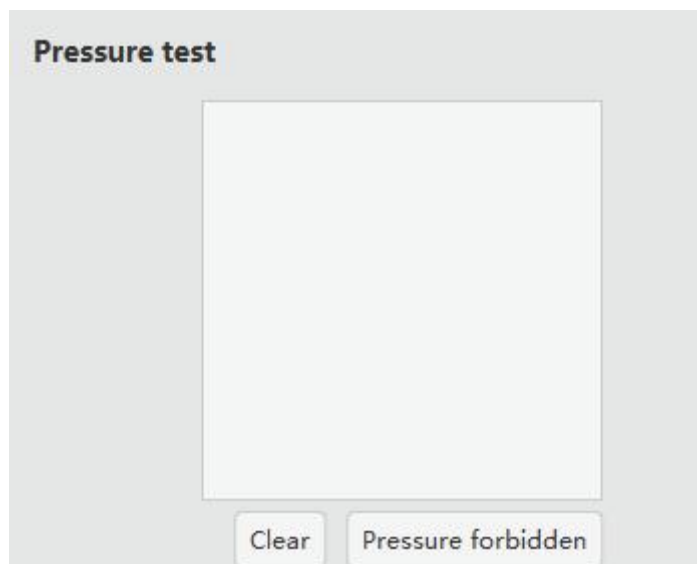


Figure 4-2 Pressure Testing Area

1.2 Pen Key Settings

Set functions of 2 keys in the drawing pen according to your needs. Select hot keys to customize settings in the drop-down list, and click “Reset” to restore keys’ functions to factory default settings;

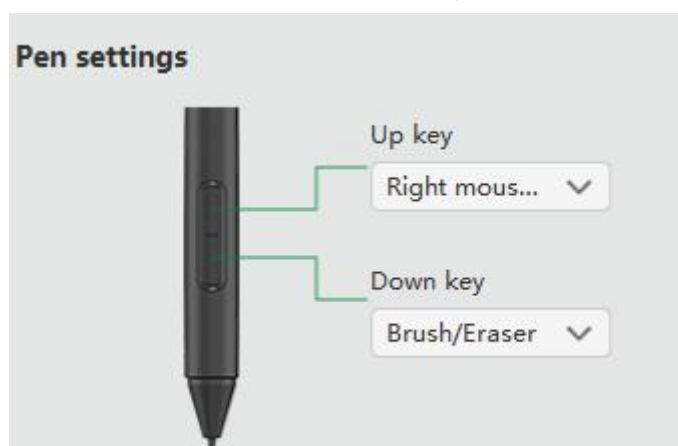


Figure 4-3 Pen Key Settings

Note:

Click keys to activate functions only when the graphic drawing pen is within the sensing height (below 10mm) of Coast12 Pro Graphic drawing monitor. The current keys’ function will show at the bottom of the display after you press keys;

1.3 Pressure Adjustment & the Current Pressure

The change of the “Input” and “Pressure” curve will adjust its pressure sensitivity.

The current pressure shows the pressure sensitivity value.

1.3.1 The default pressure sensitivity—medium pressure

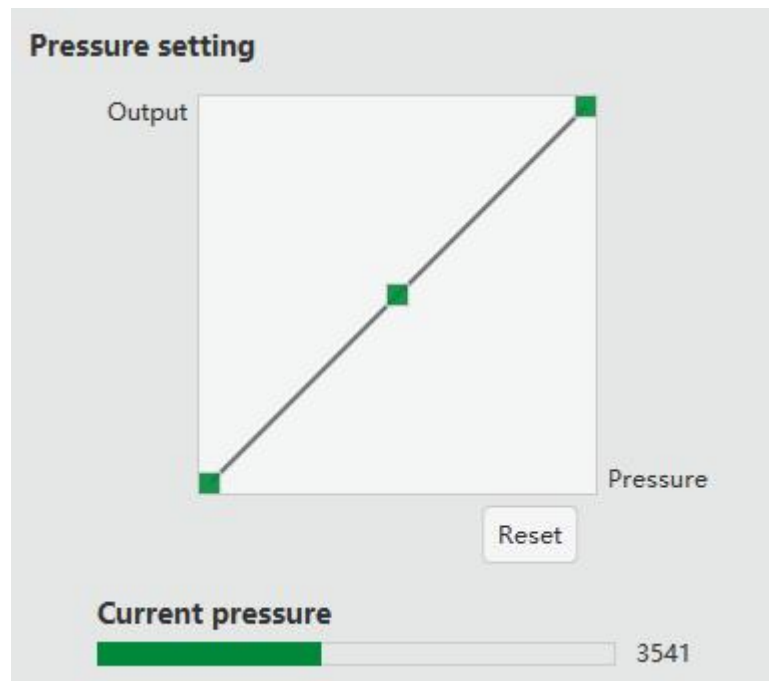


Figure 4-4 Medium Pressure

1.3.2 High pressure sensitivity—softer pressure

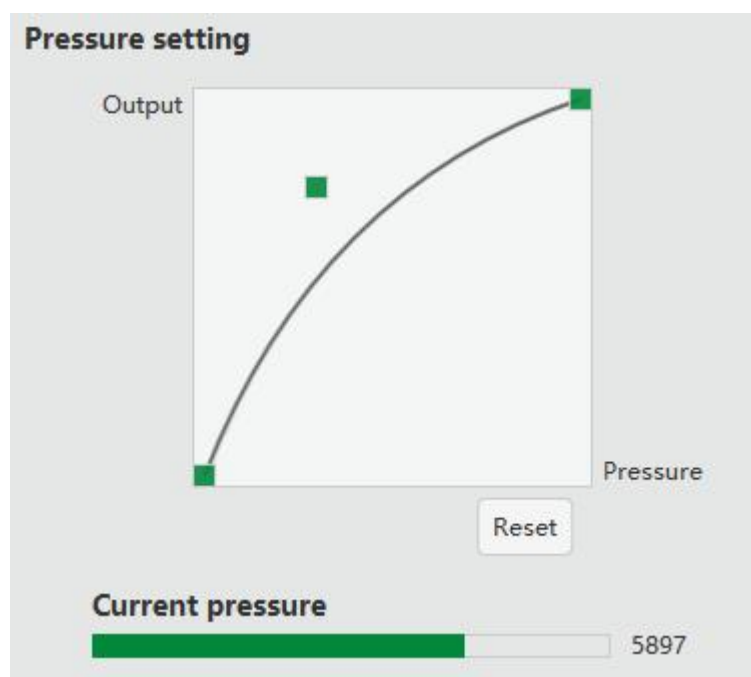


Figure 4-5 Softer Pressure

1.3.3 Lower pressure sensitivity – harder pressure

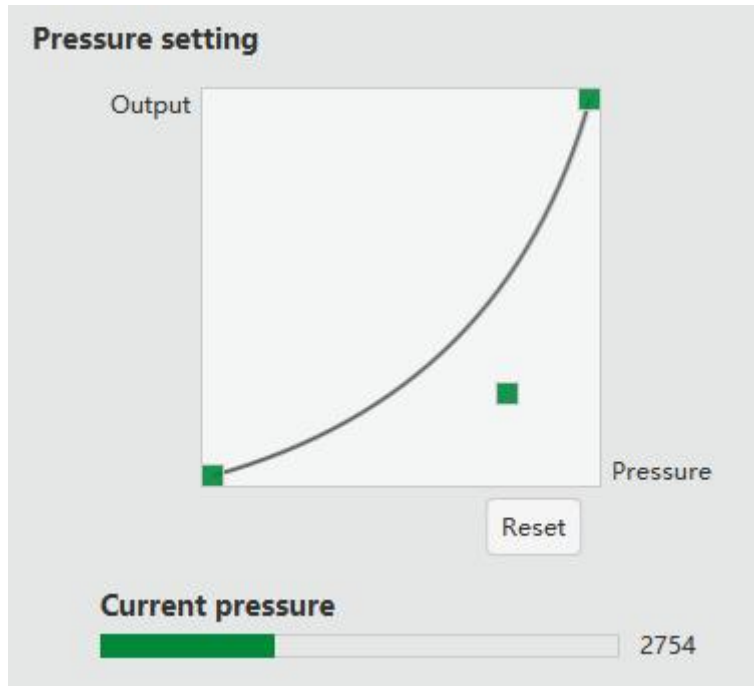


Figure 4-6 Harder Pressure

1.4 Coordinate Mode

“Absolute” indicates that the graphic drawing monitor matches the coordinate position on display;

“Relative” indicates that the position of the graphic drawing monitor relatively maps the screen’s resolution ratio site (also known as mouse mode). Now, only graphic drawing tablets support such mode, instead of graphic drawing monitors.

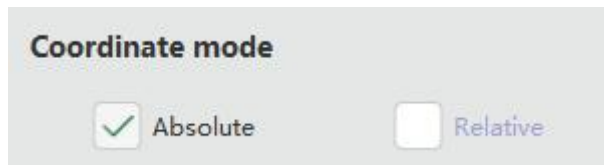


Figure 4-7 Coordinate Mode

1.5 Windows Ink

Check such function to support Windows handwriting tablet protocol, and partial drawing software support Window Ink function.



Figure 4-8 Window Ink

2. Area Settings

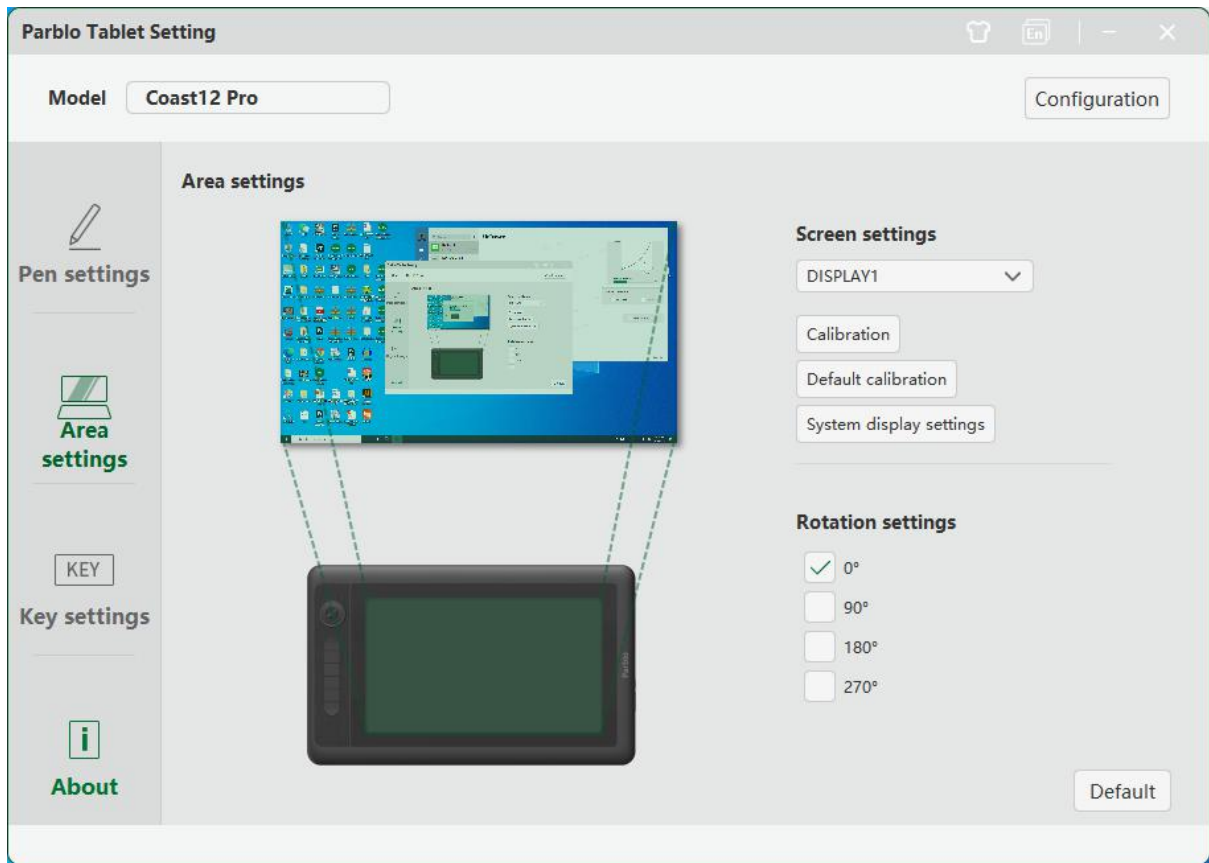


Figure 4-9 Area Settings

2.1 Display Settings

Users can select the control area of the graphic drawing pen as the display of the graphic drawing monitor or the main engine of your computer;

2.2 Calibrate

Calibration function equipped with the graphic drawing monitor can avoid the space between the graphic drawing pen and cursor;

The factory calibration value is the default.

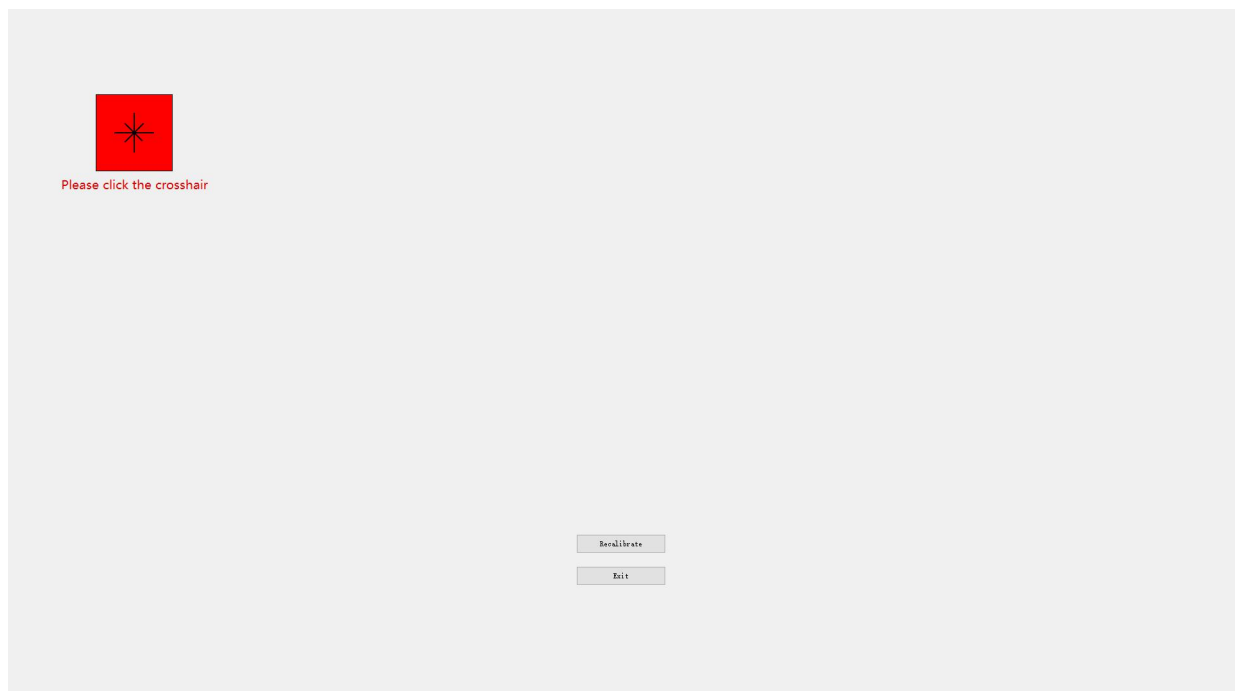


图 4-10 校准

Figure 4-10 Calibrate

2.3 Rotation Settings

User can set the angle of Coast12 Pro graphic drawing monitor, and 0° is the default (it means that it can be used on the left). In case of other angles, please rotate the Coast12 Pro graphic drawing monitor through the relevant angles clockwise.

3. Key Settings

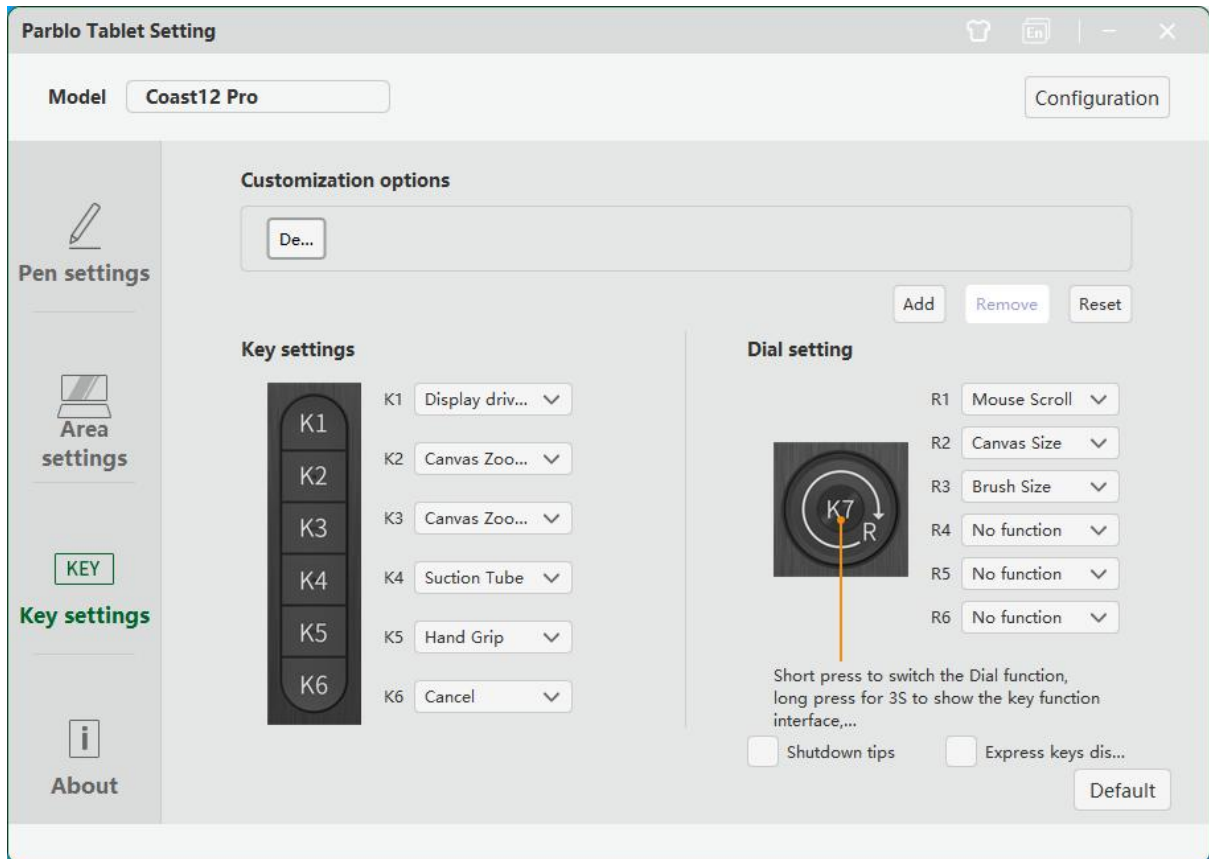


Figure 4-11 Keys

Notes:

- A. Set the input language to English when you are using shortcut keys, otherwise some functions may fail to work;
- B. The default function of shortcut keys is the selected Photoshop command. You can set them according to your needs;
- C. The key in the middle of the rotation is set to switch the rotation functions.

3.1 Key Settings

The default setting of Parblo is the shortcut functions of Photoshop, and you can customize the functions of K1, K2, K3, K4, K5 and K6. Click the drop-down list to select "Hot Keys" and enter the self-defined interface.

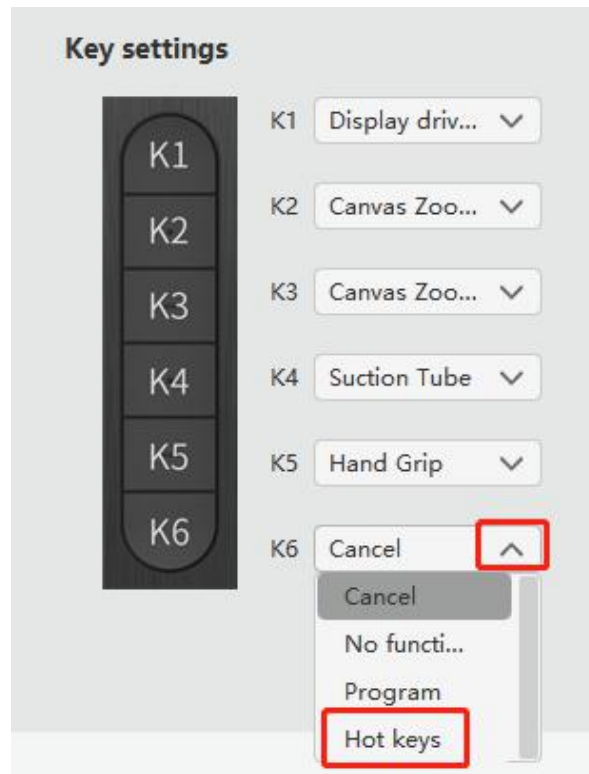


Figure 4-12 Self-defined Keys 1

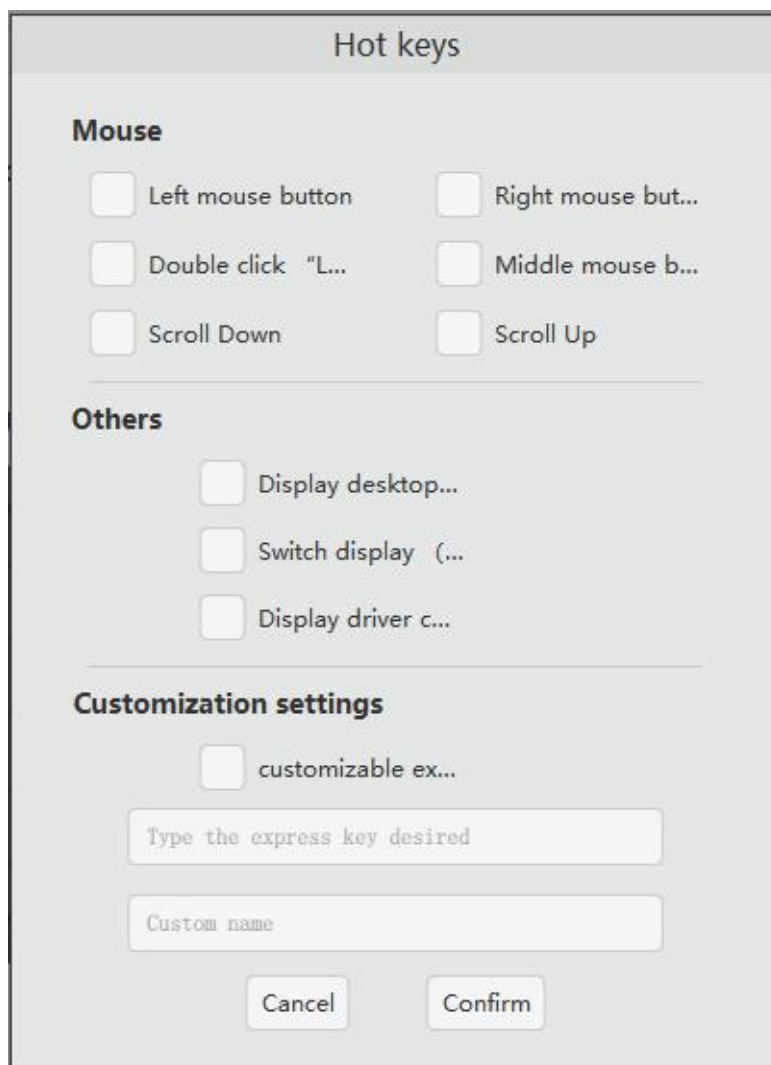


Figure 4-12 Self-defined Keys 2

3.2 Rotation Settings

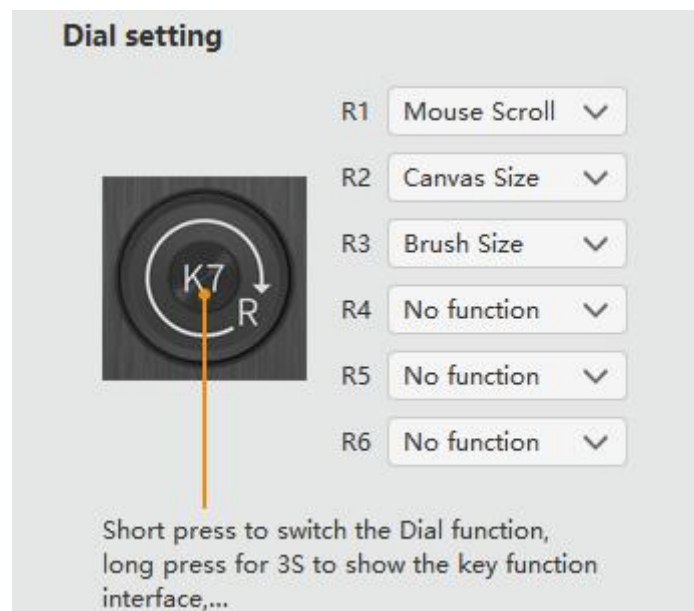


Figure 4-14 Rotation Settings

The default functions of R1, R2 and R3: Mouse wheel, Canvas size (Photoshop), Brush size (Photoshop). R4, R5 and R6 come no functions, and you can click the drop-down list to define your settings according to your actual demands.

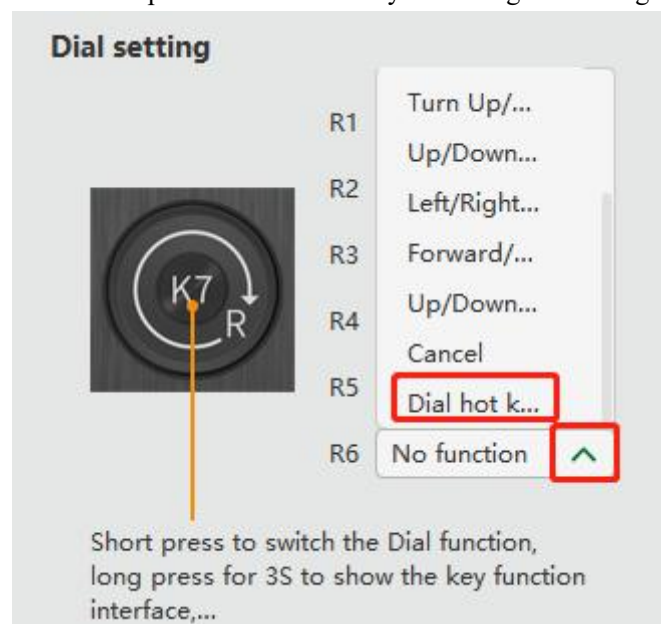


Figure 4-15 Self-defined Rotation 1

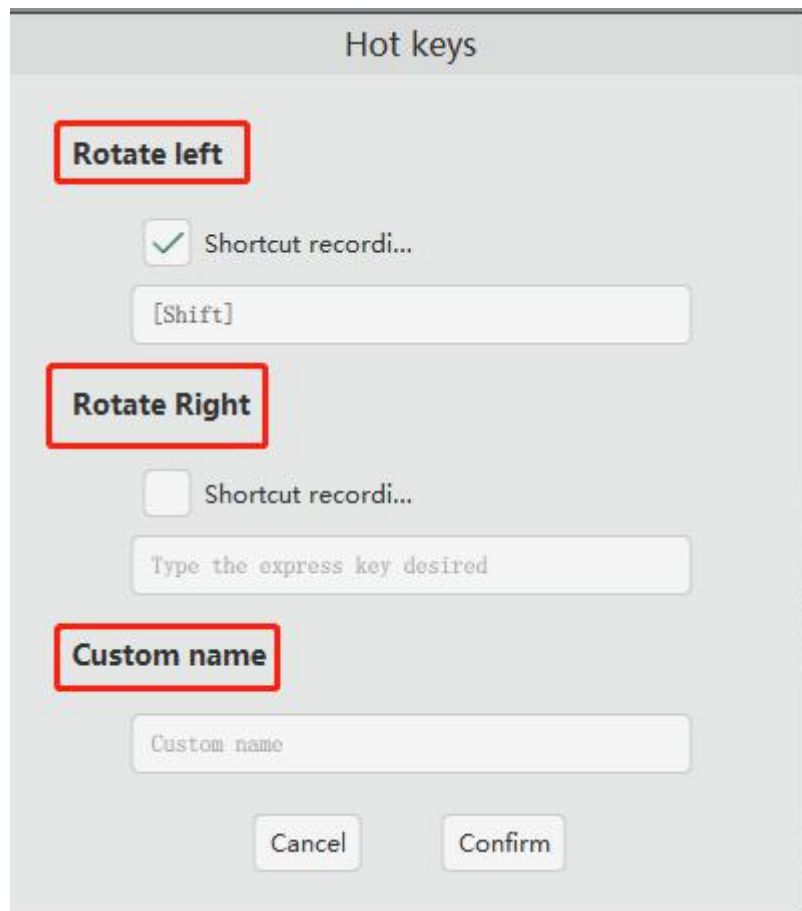


Figure 4-16 Self-defined Rotation 2

3.3 Turn off Prompts & Disable Shortcut Keys



Check “Turn off Prompt”, and no function names will be prompted during your use;

Check “Disable Shortcut Keys”, and keys’ functions fail to work.

3.4 Self-defined Options

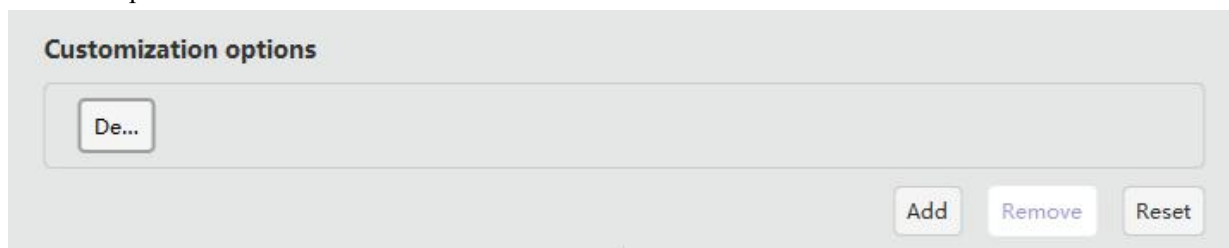


Figure 4-17 Self-defined Option 1

The default setting is the Parblo built-in key + rotation function (Photoshop), and you can click to add in order to configure more software with self-defined keys’ functions.

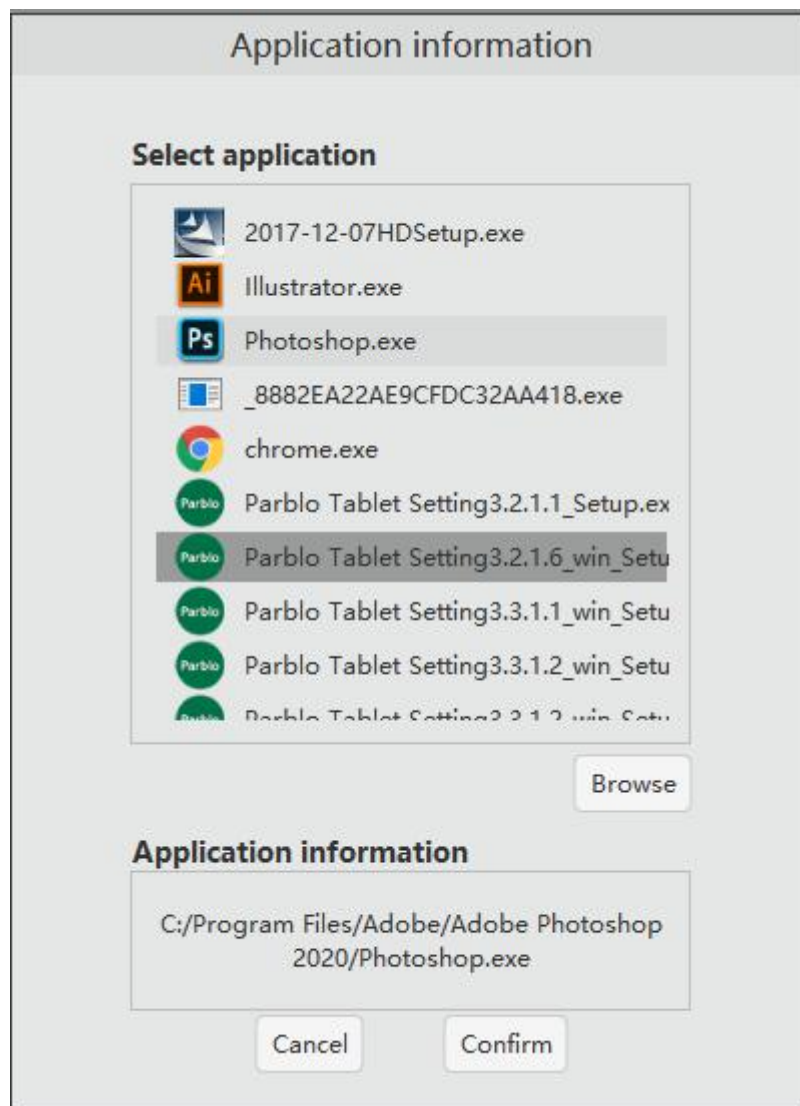


Figure 4-18 Self-defined Option 2

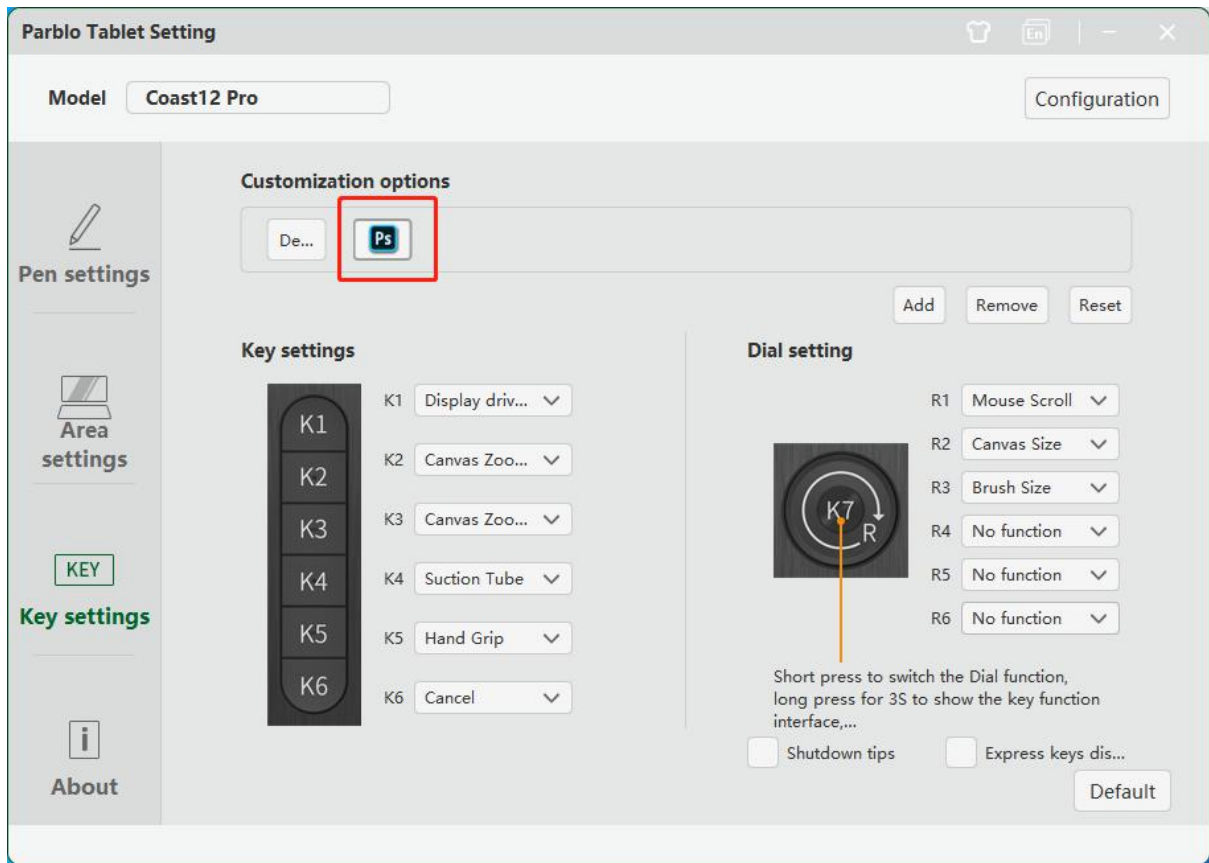


Figure 4-19 Self-defined Option 3

Click the software icon that has been added to customize its key and rotation functions;
 Select the software icon and click “Remove” to delete the current software configuration;
 Click “Reset” to restore the default settings.

4. Configuration Settings



Figure 4-20 Configuration Settings

You can save and read the set value of functions such as shortcut keys and rotation via export and import configuration.

Note:

When all the shortcut key functions are set, please click "Export Configuration" to save your settings.

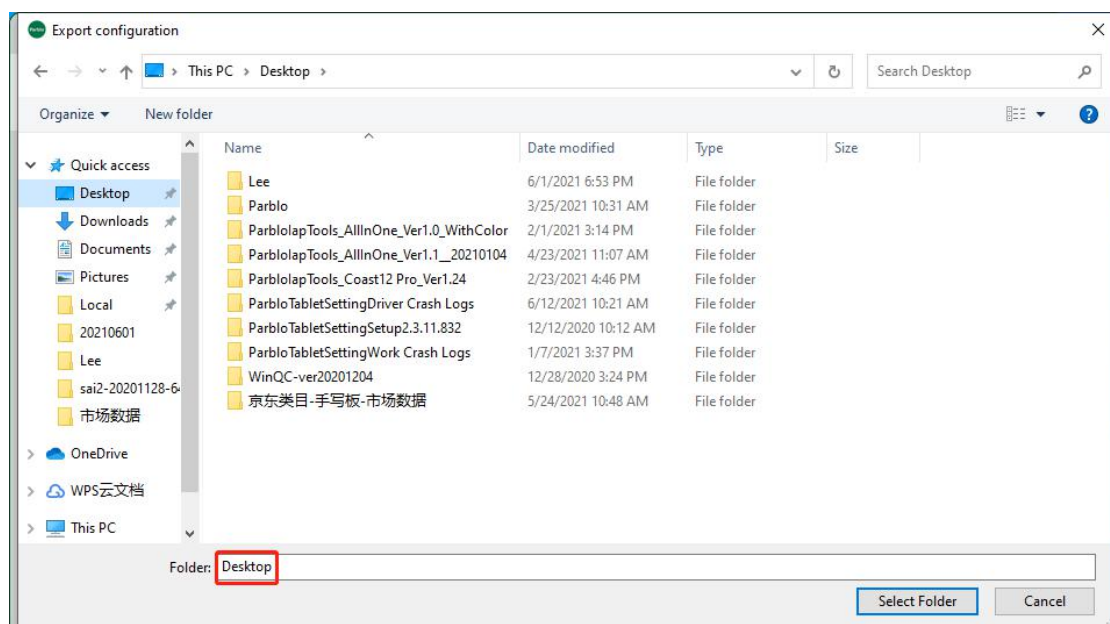


Figure 4-21 Export Configuration

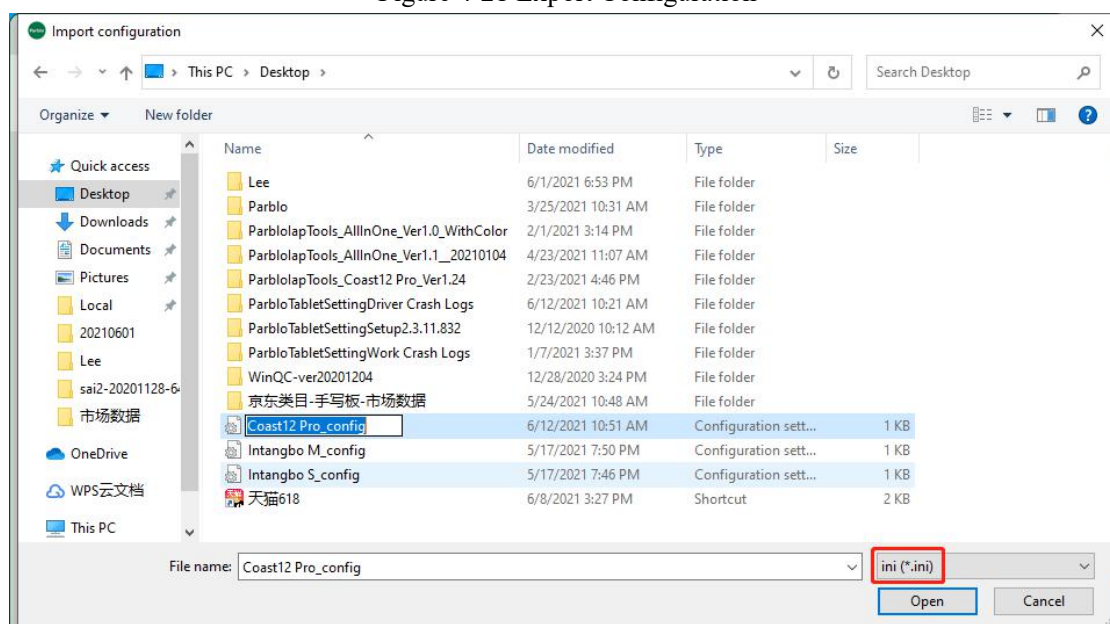


Figure 4-22 Import Configuration

5. About

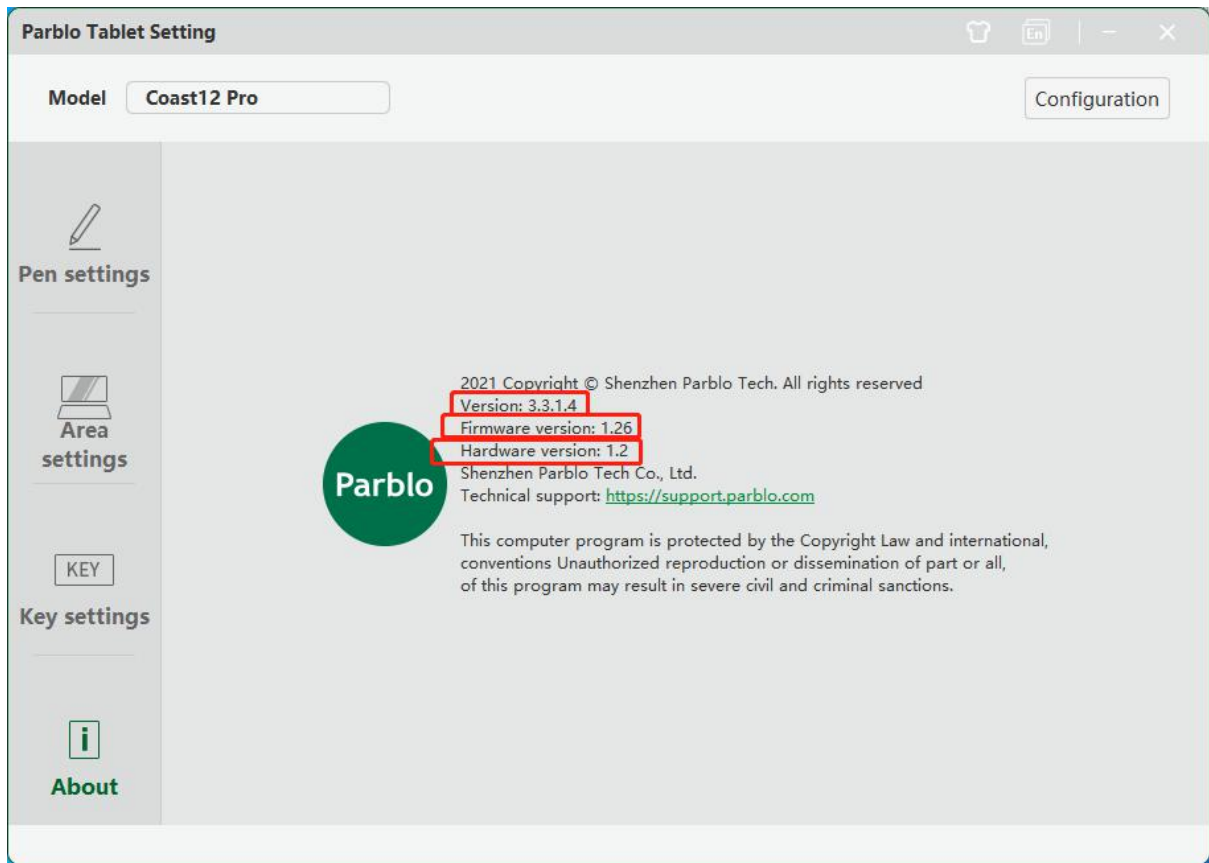


Figure 4-23 About

Show the current driver version: 3.3.1.4

Show the current firmware version: 1.26

Show the current hardware version: 1.2

Mac

You can find the Parblo icon in the Launchpad, then click to open the drive interface.

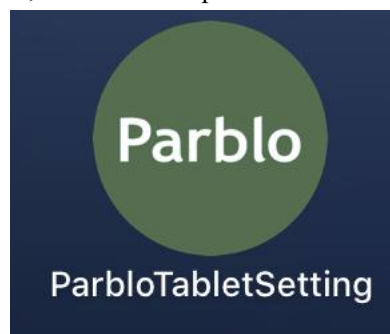


Figure 4-24 Drive Icon

1. The Main Interface

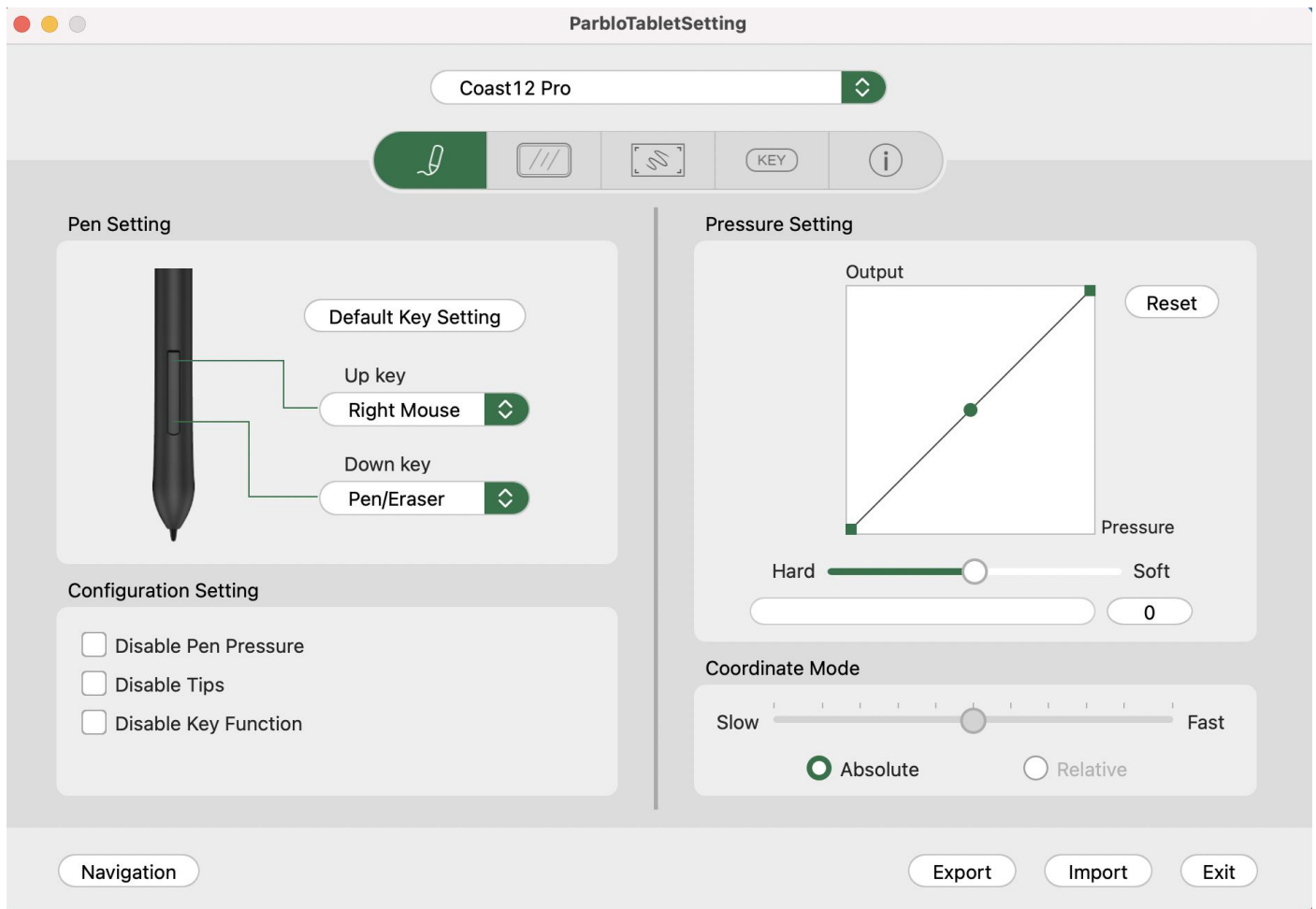


Figure 4-25 Drive Interface

1.1 Pen Settings

Set functions of 2 keys in the drawing pen according to your needs. Select hot keys to customize settings in the drop-down list, and click “Reset” to restore keys’ functions to factory default settings;

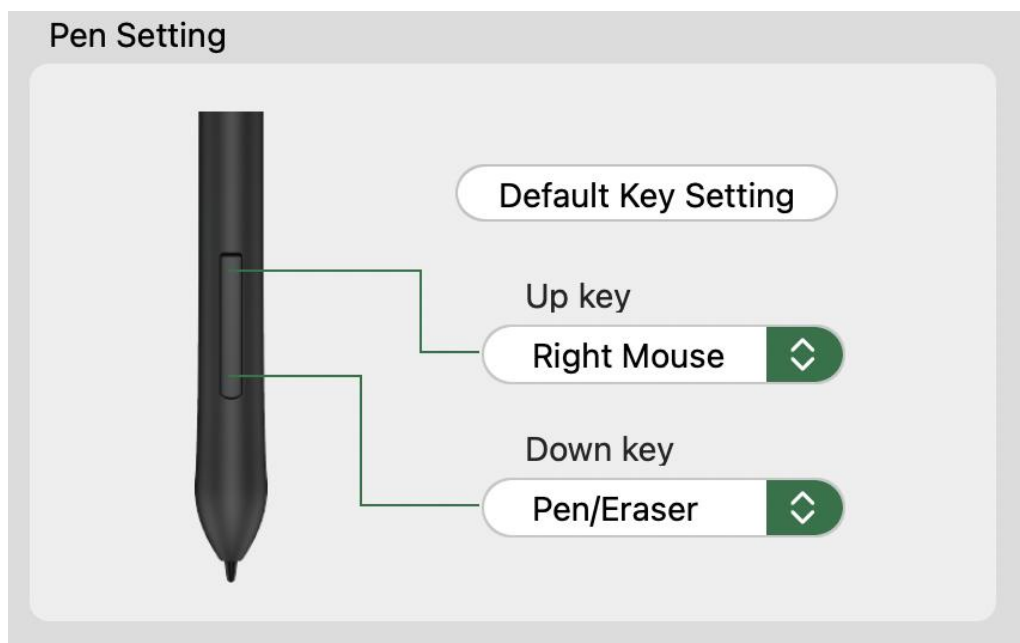


Figure 4-26 Pen Settings

Note:

Click keys to activate functions only when the graphic drawing pen is within the sensing height (below 10mm) of

Coast12 Pro Graphic drawing monitor. The current keys' function will show at the bottom of the display after you press keys;

1.2 Configuration Settings

Check “No Pressure” to turn off the pressure sensitivity function;

Check “No Prompt” to turn off the key/rotation function prompt;

Check “No Shortcut Key Function” to turn off the key function.

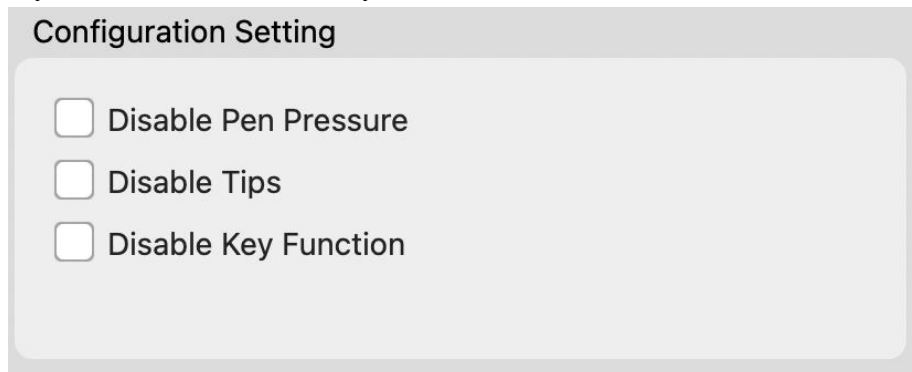


Figure 4-27 Configuration Settings

1.3 Pressure Settings

The change of the “Input” and “Pressure” curve will adjust its pressure sensitivity.

The pressure line shows the current pressure sensitivity value.

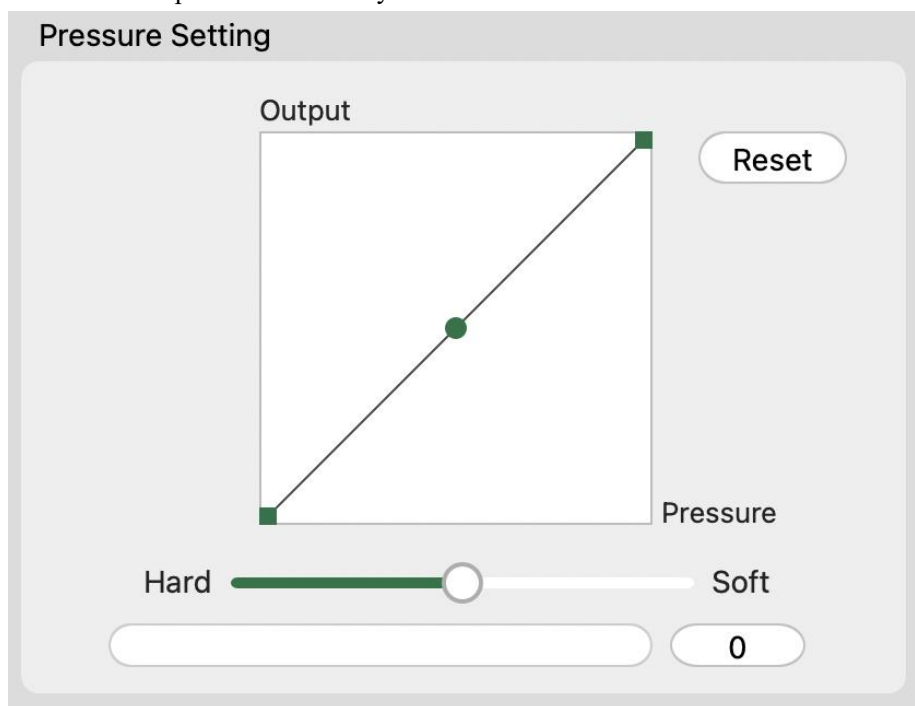


Figure 4-28 Pressure Testing

1.4 Coordinate Mode

“Absolute Coordinate” indicates that the graphic drawing monitor matches the coordinate position on display;

“Relative Coordinate” indicates that the position of the graphic drawing monitor relatively maps the screen’s resolution ratio site (also known as mouse mode). Now, only graphic drawing monitors support such mode, instead of graphic drawing monitor.

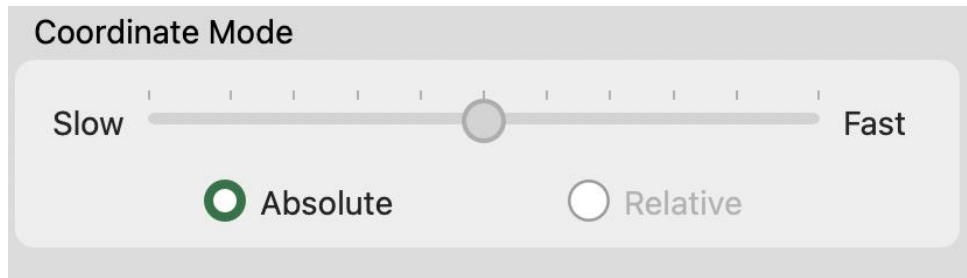


Figure 4-29 Coordinate Mode

2. Display Settings

Users can select the control area of the graphic drawing pen as the display of the Graphic drawing monitor or the main engine of computers;

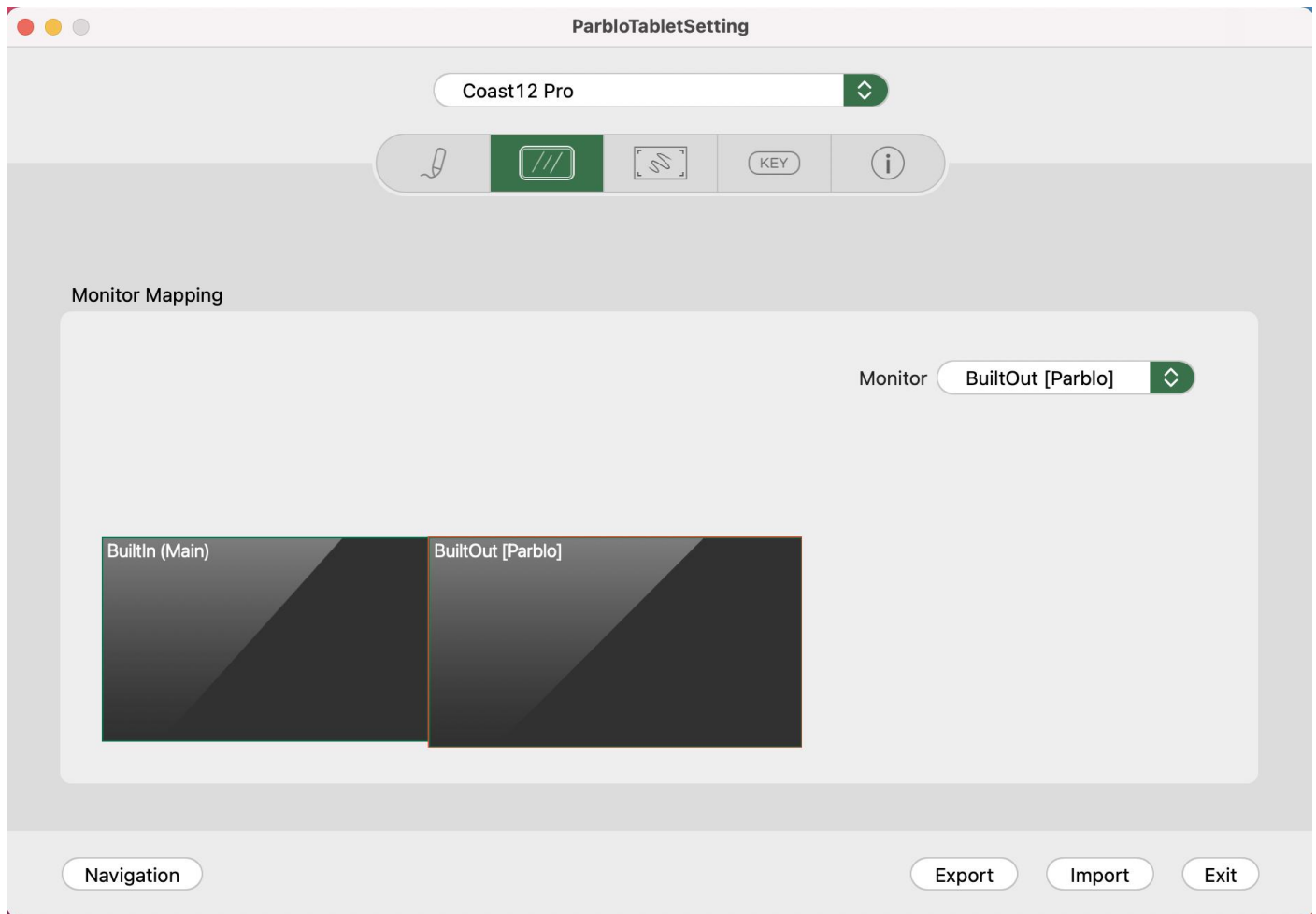


Figure 4-30 Monitor Settings

3. Graphic drawing monitor Settings

3.1 User can set the angle of Coast12 Pro graphic drawing monitor, and 0° is the default (it means that it can be used on the left). In case of other angles, please rotate the Coast12 Pro graphic drawing monitor through the relevant angles clockwise.

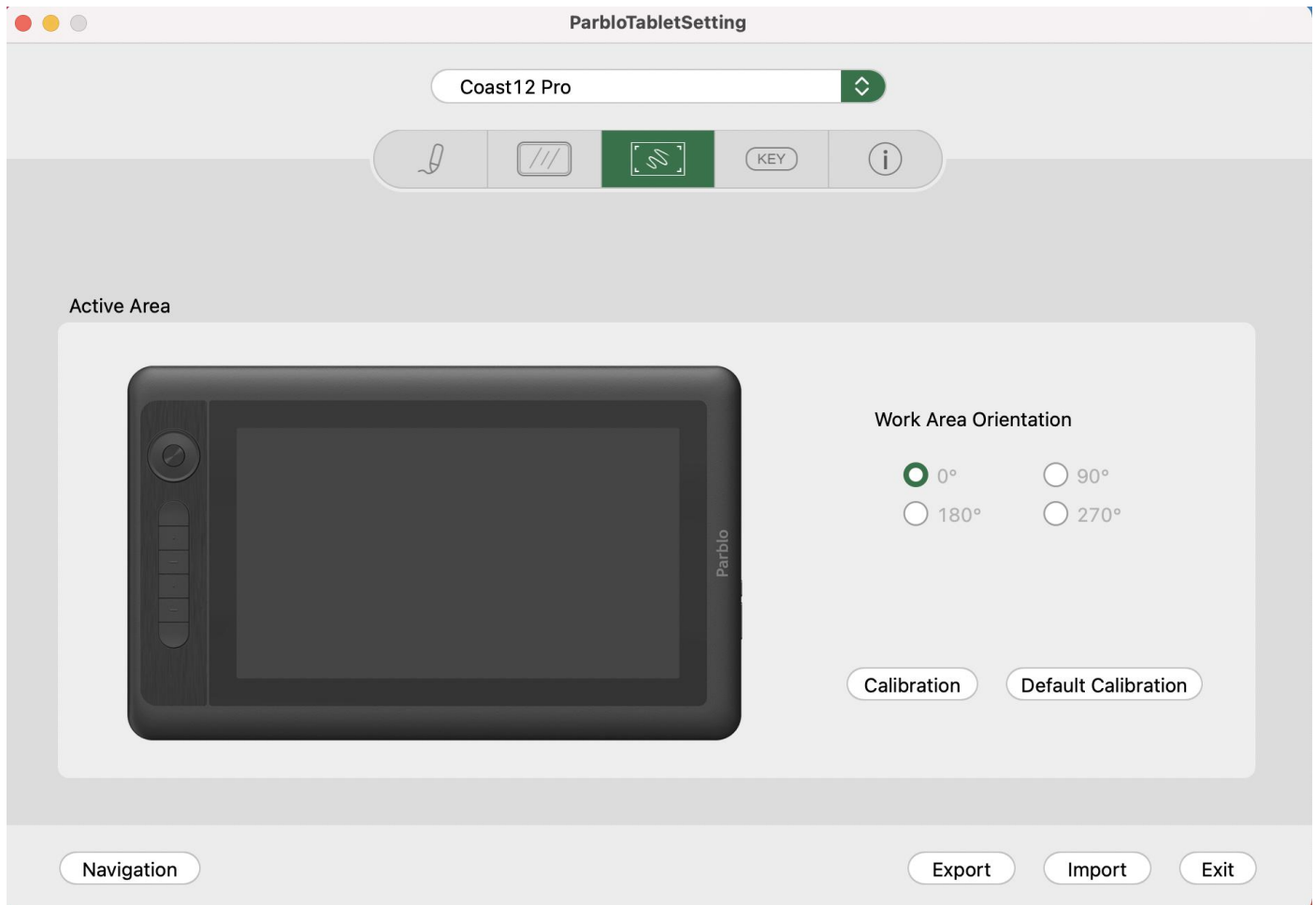


Figure 4-31 Graphic Drawing Monitor Settings

3.2 Calibrate

Calibration function equipped with the graphic drawing monitor can avoid the space between the graphic drawing pen and cursor;

The factory calibration value is the default.

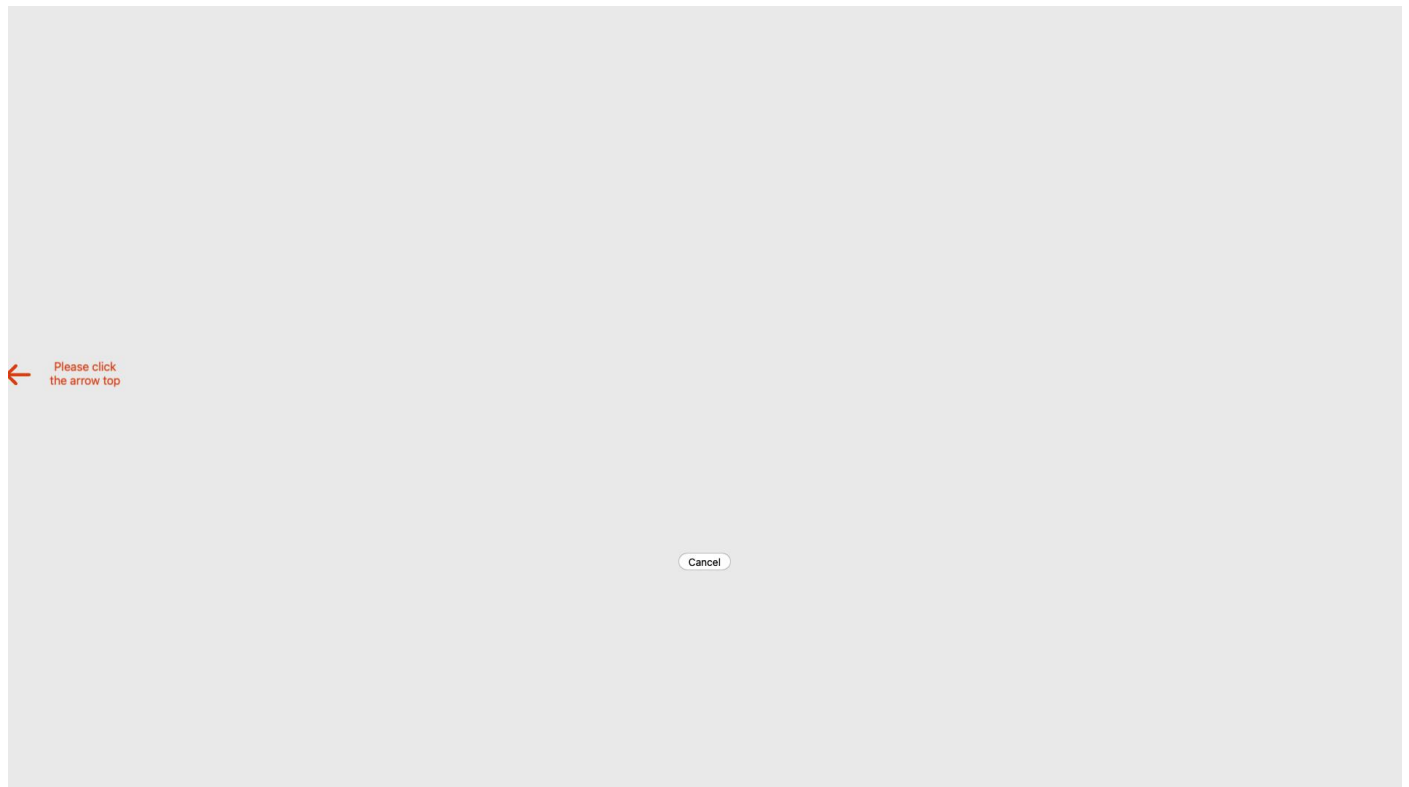


Figure 4-32 Calibrate

4. Key/Rotation Settings

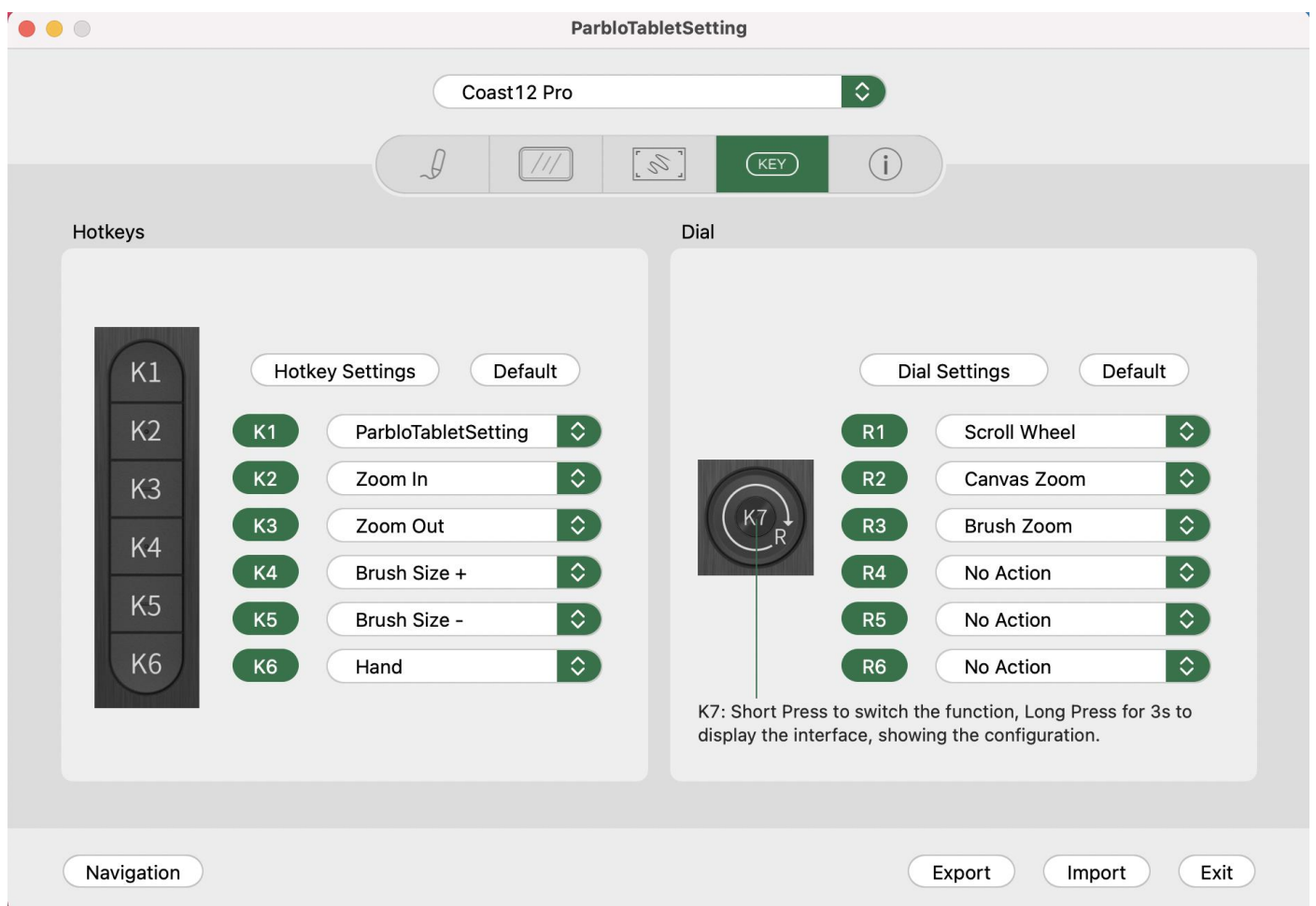


Figure 4-33 Key/Rotation Settings

Notes:

- A. Set the input language to English when you are using shortcut keys, otherwise some functions may fail to work;**
- B. The default function of shortcut keys is the selected Photoshop command. You can set them according to your needs;**
- C. The key in the middle of the rotation is set to switch the rotation's functions.**

4.1 Key Settings

The default setting of Parblo is the shortcut functions of Photoshop, and you can customize the functions of K1, K2, K3, K4, K5 and K6. Click the drop-down list to select “Self-defined” and enter the self-defined interface.

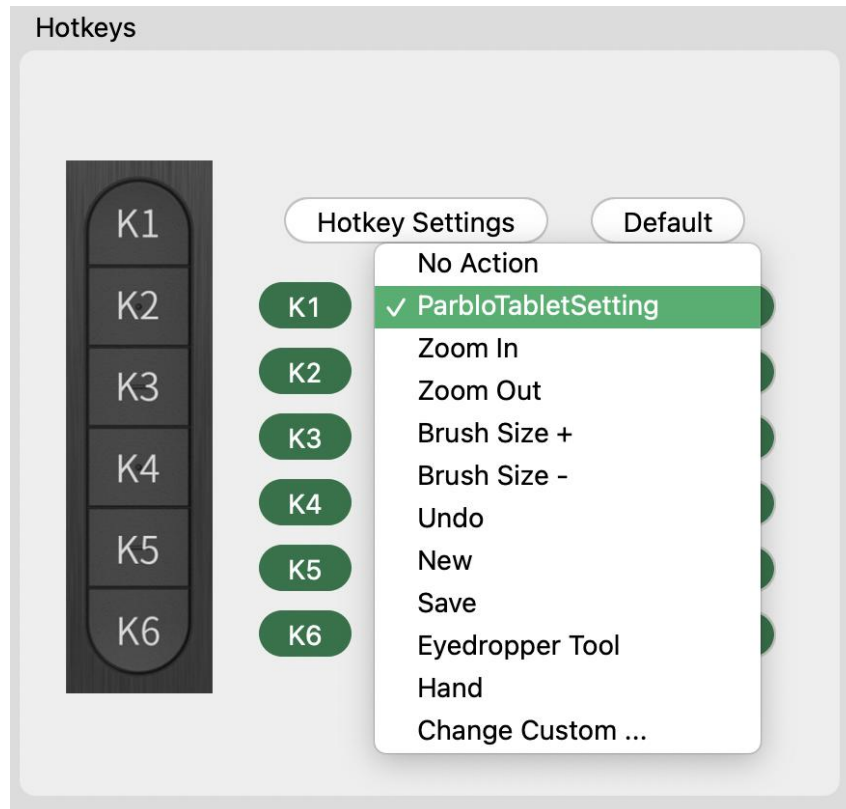


Figure 4-34 Hot Key Settings 1

User can set functions, including run program, hot key settings, website link and mouse functions.

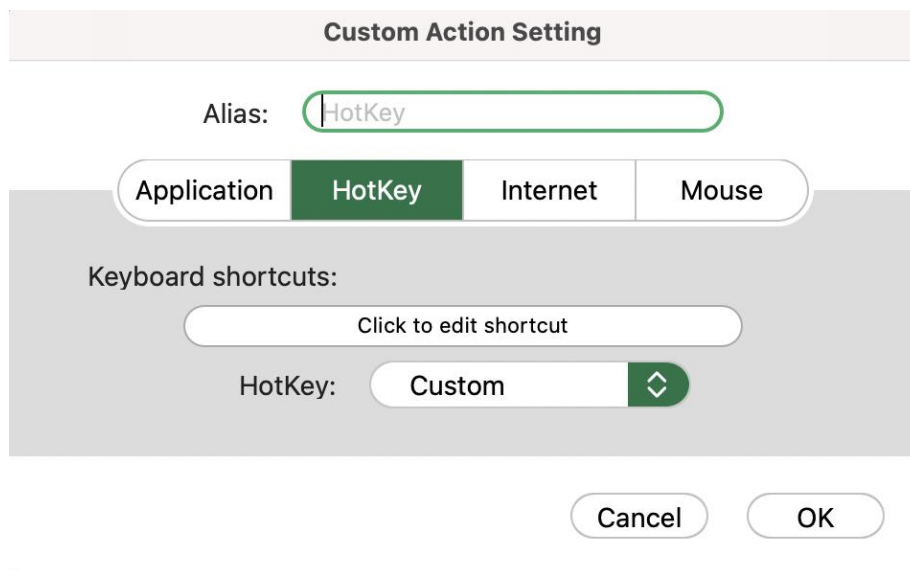


Figure 4-35 Hot Key Settings 2

Click “Hot Key Settings” to customize the function of shortcut keys for different software;

a Click “+”

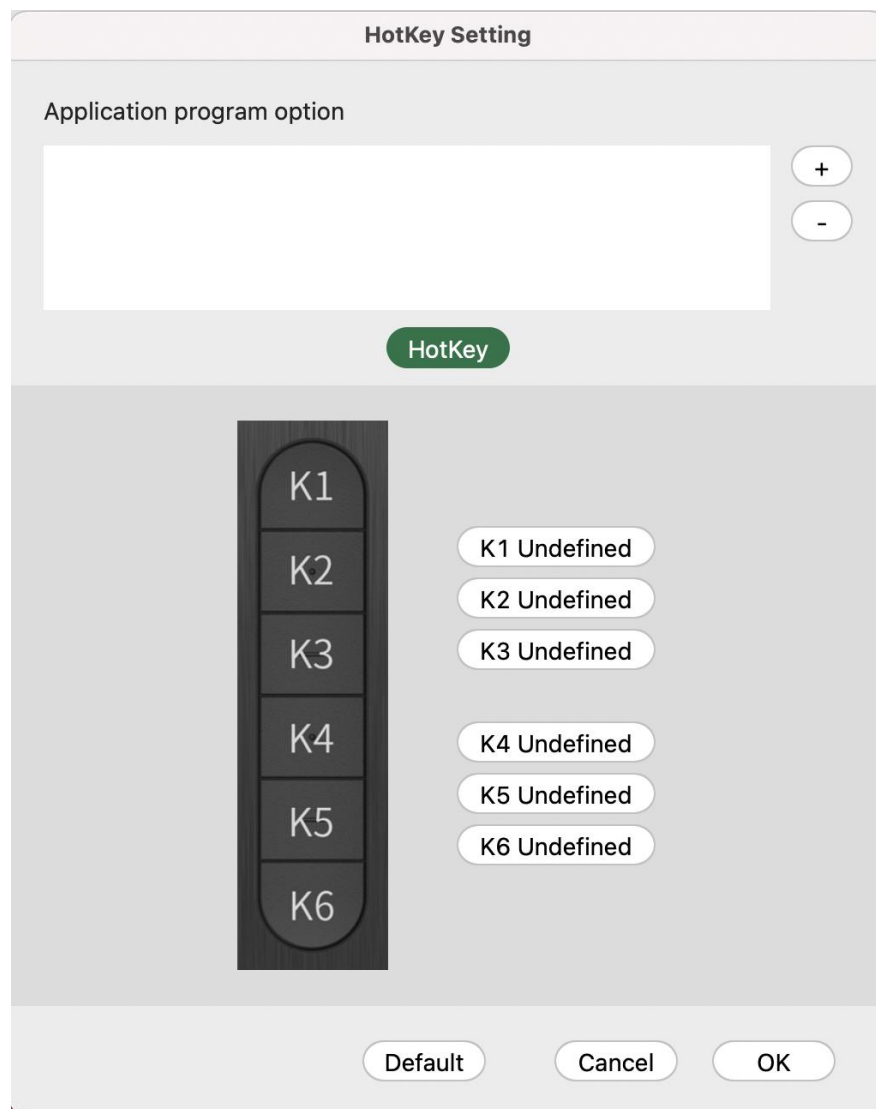


Figure 4-36 Self-defined Software Hot Key 1

b Select software that you want to add

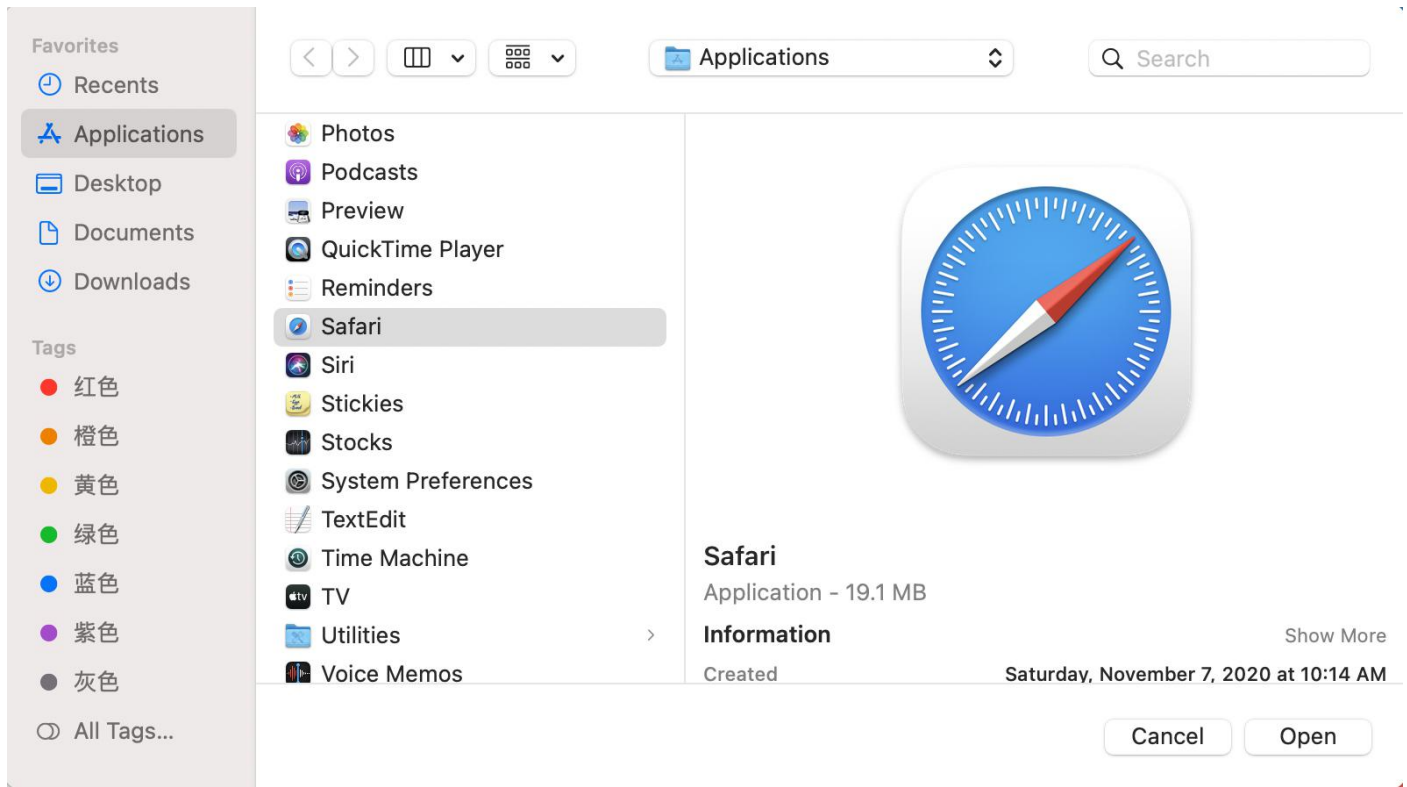


Figure 4-37 Self-defined Software Hot Key 2

c Set functions for each shortcut key in sequence

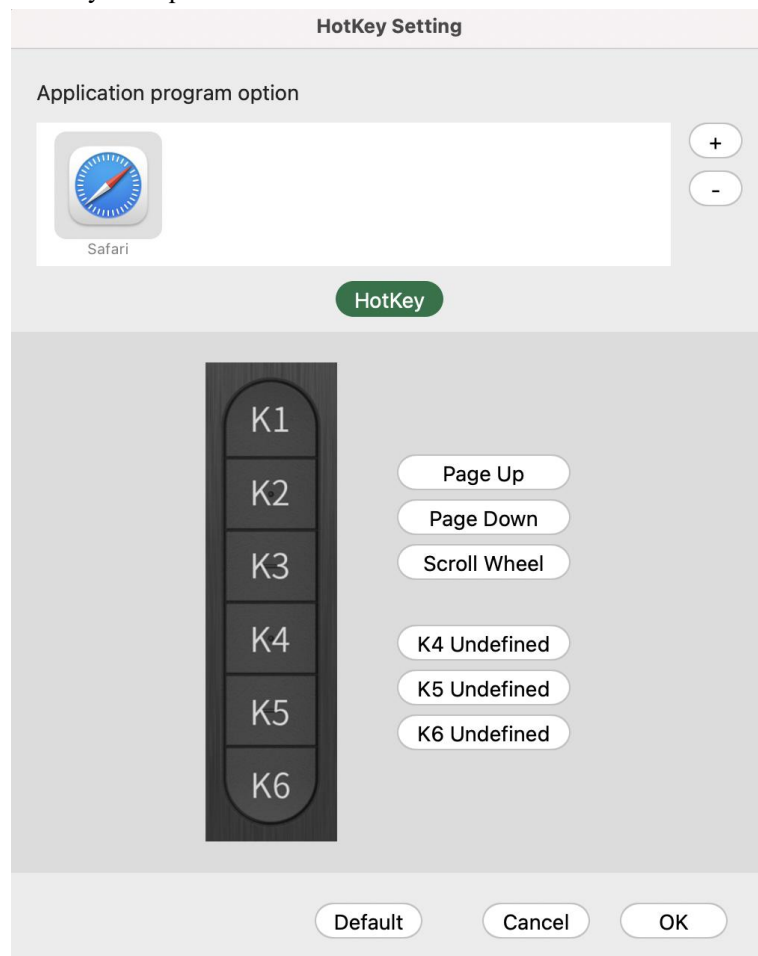


Figure 4-38 Self-defined Software Hot Key 3

4.2 Rotation Settings

The default functions of R1, R2 and R3: Mouse wheel, canvas zoom (Photoshop), brush zoom (Photoshop). R4, R5 and R6 come no functions, and you can click the drop-down list to define your settings according to your actual demands.

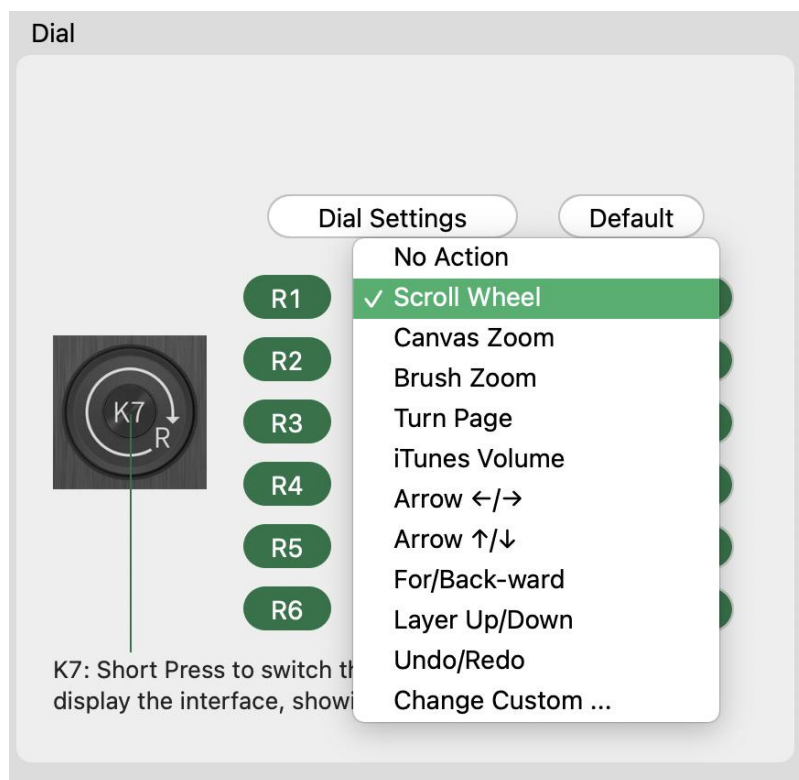


Figure 4-39 Rotation Settings 1

Click “Self-defined” to set rotate clockwise/anticlockwise, and users can name such function.

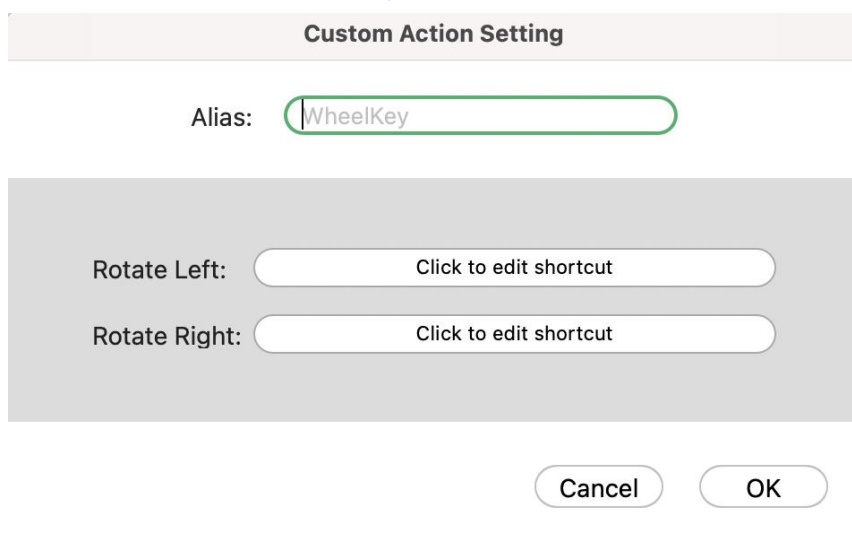


Figure 4-40 Rotation Settings

Click “Rotation Settings” to customize rotation function for each software.

a click “+”

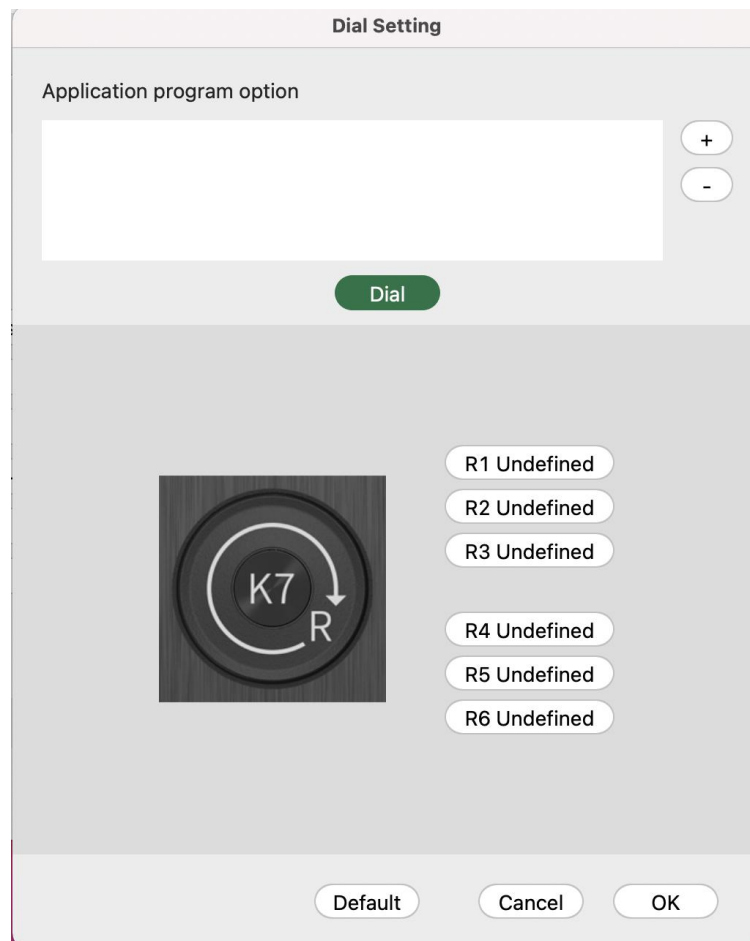


Figure 4-41 Self-defined Software Rotation 1

b Select software that you want to add

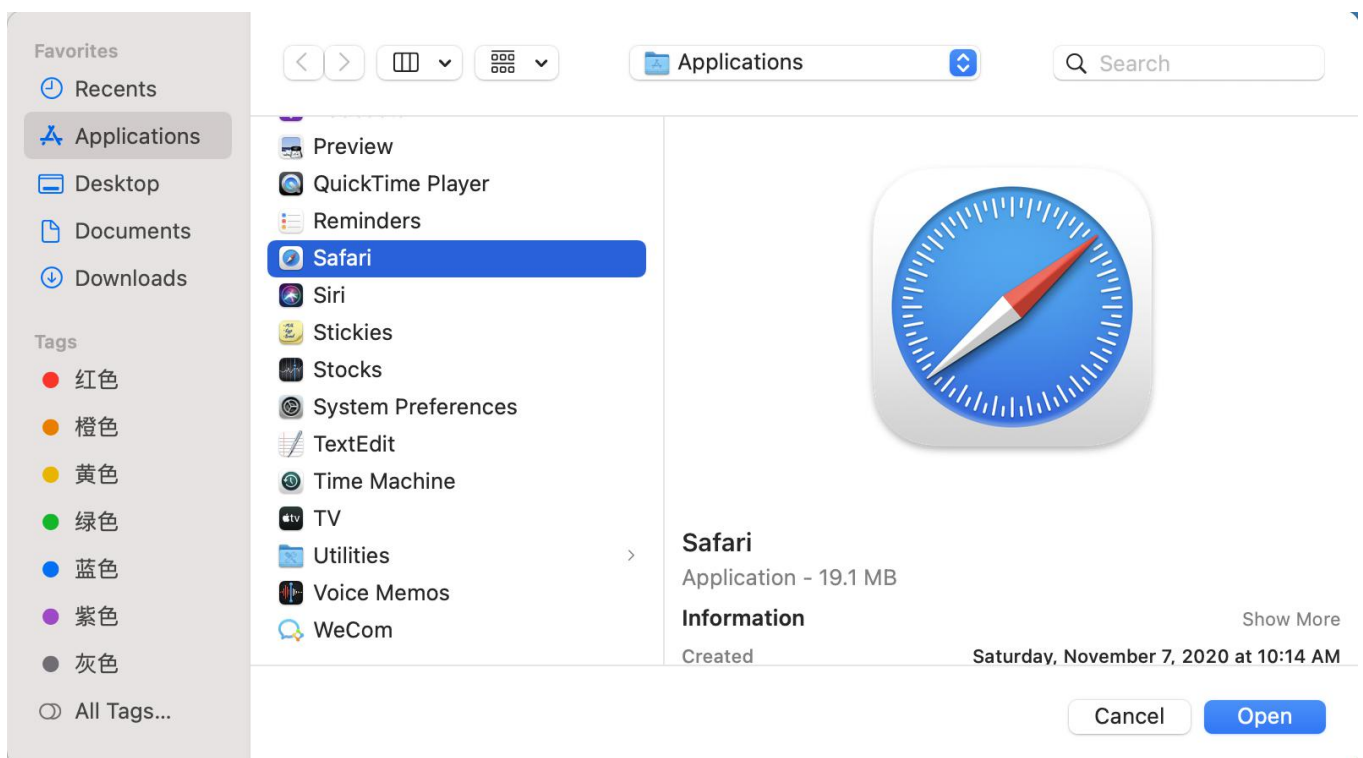


Figure 4-42 Self-defined Software Rotation 2

c Set functions for each shortcut key in sequence

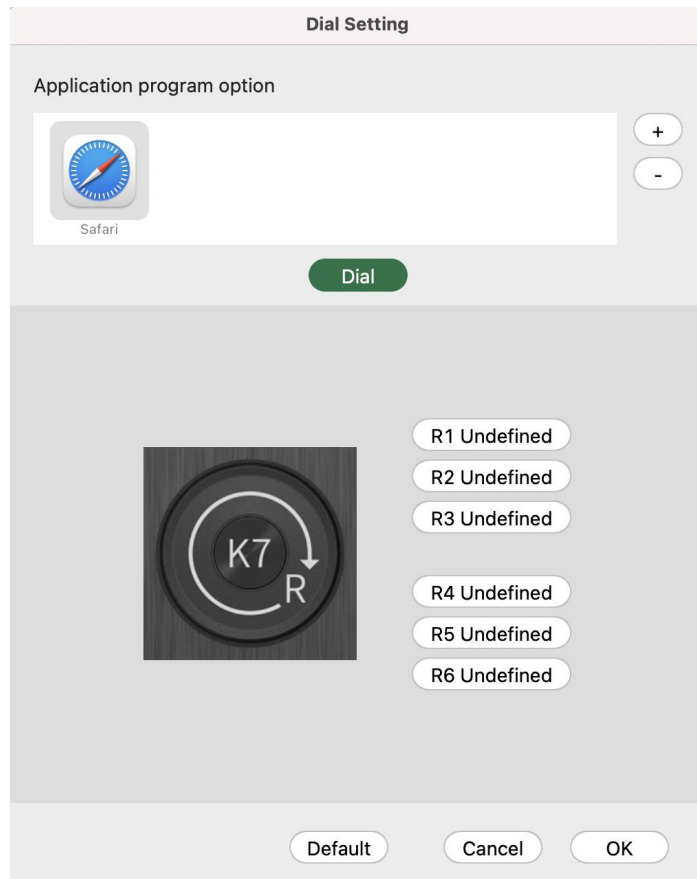


Figure 4-43 Self-defined Rotation Software Rotation 2

5. Configuration File

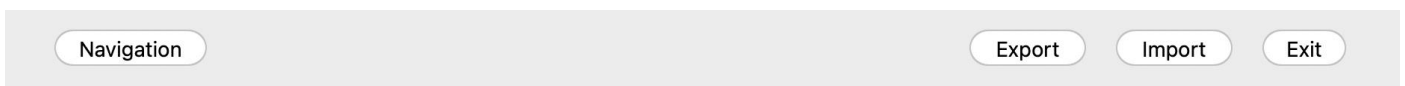
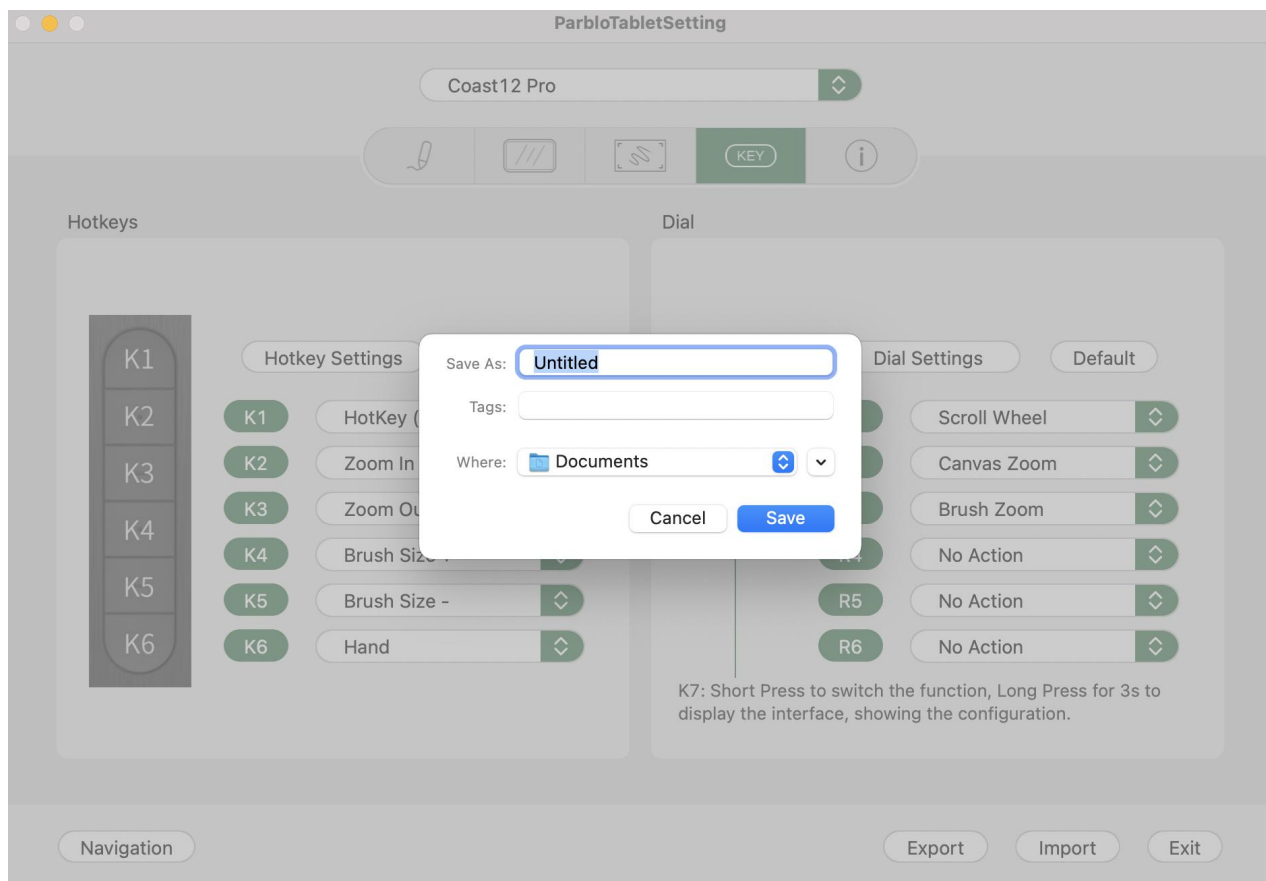


Figure 4-44 Configuration File

You can save and read the set value of functions such as shortcut keys and rotation via export and import configuration.
Note:

It is essential to click “OK” at the bottom to save after you finish all function settings of shortcut keys, then click “Export Configuration” to save your settings.



Figur3 4-45 Export

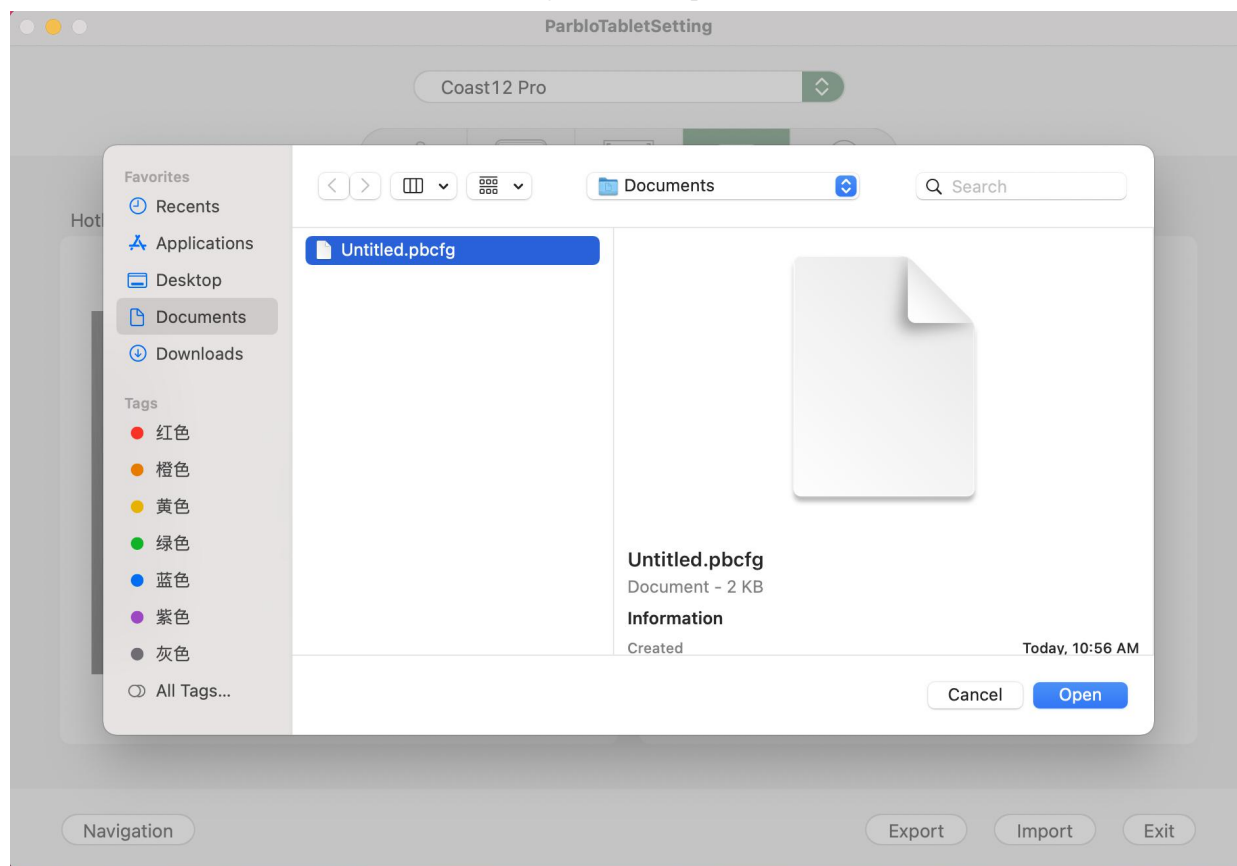


Figure 4-46 Import

6. About

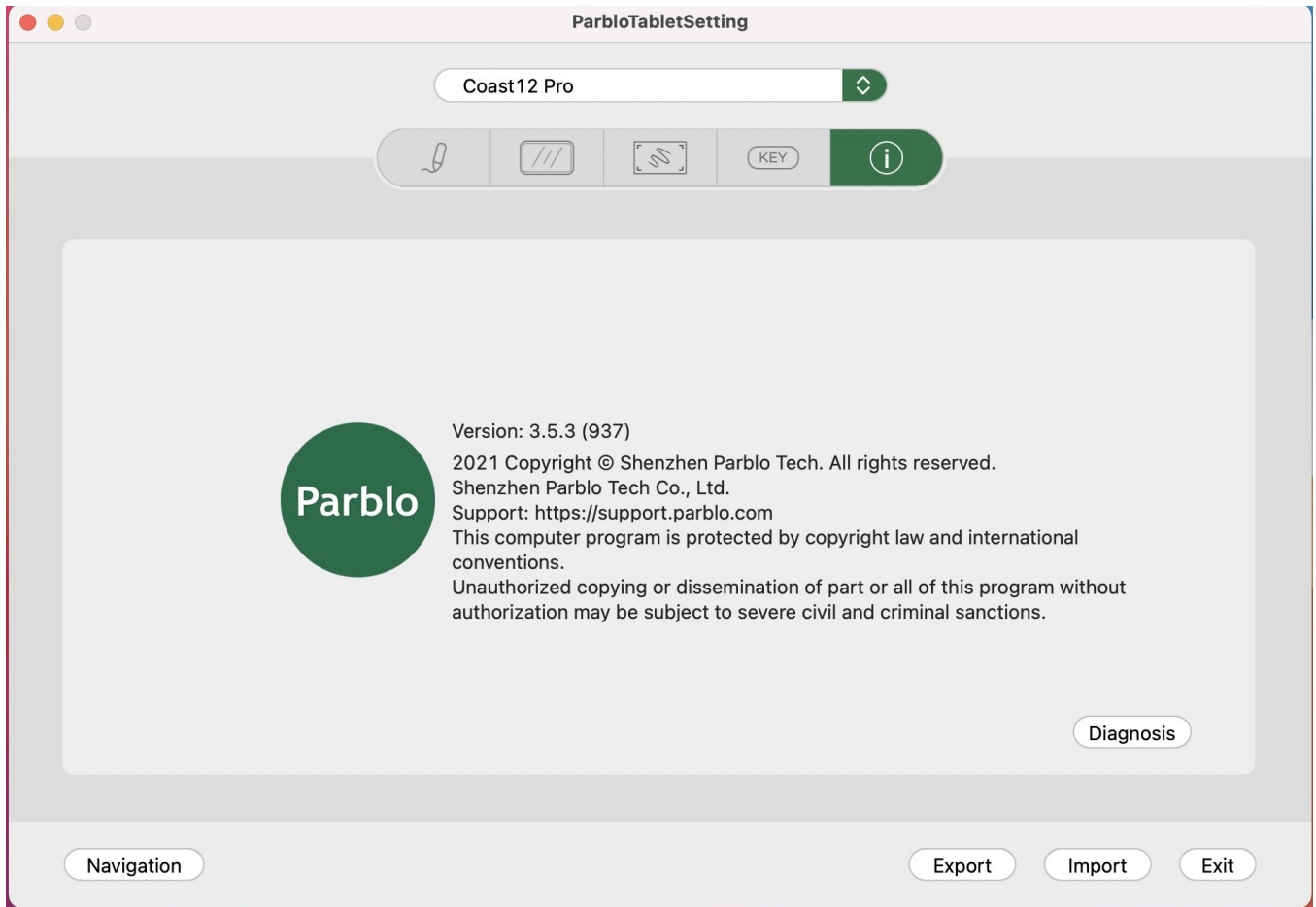


Figure 4-47 About

6.1 Diagnosis

6.1.1 Diagnostic Tools can display the current "hardware info", "environment info" and "pen coordinate info".

6.1.2 click "firmware download" to jump to the parblo support interface and download the latest firmware upgrade file.

6.1.3 click "firmware upgrade" to upgrade the current product and update the firmware version.

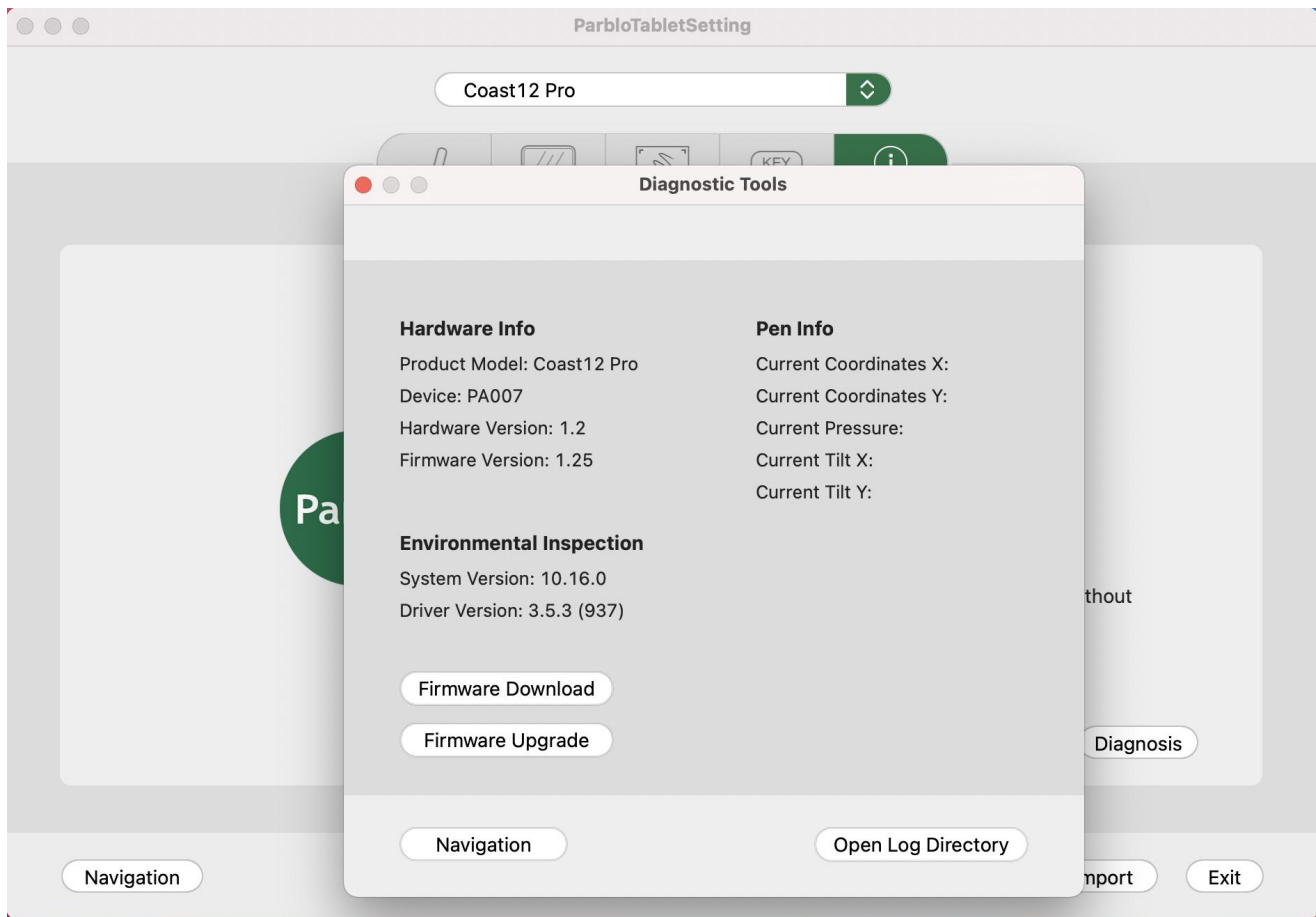


Figure 4-48 Diagnostic tools

V Remove Drive Programs

Windows

You can find "parblotabletsetting" in the "Start Menu-Settings-Applications-Applications and Features" interface, click Uninstall and follow the prompts to complete the uninstallation.

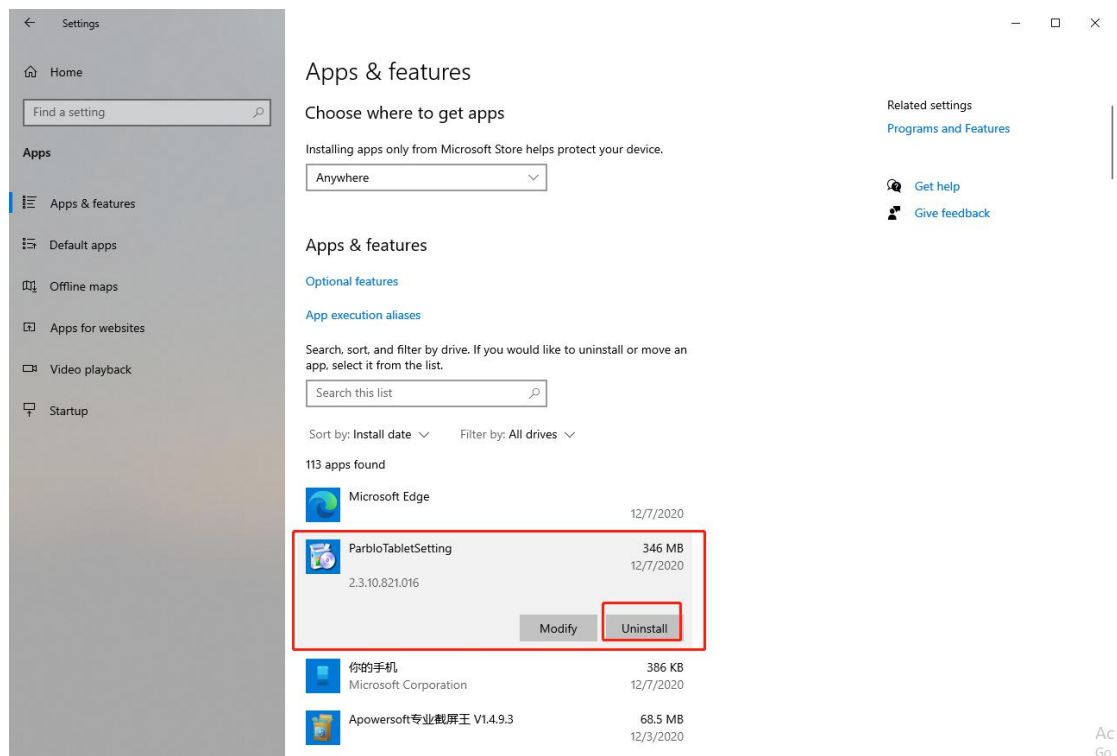


Figure5-1 Install Windows

Mac

You can find the "ParbloTablet" file in the Finder-application to open it, find "uninstallParbloTablet" and double-click to uninstall it according to the prompts.

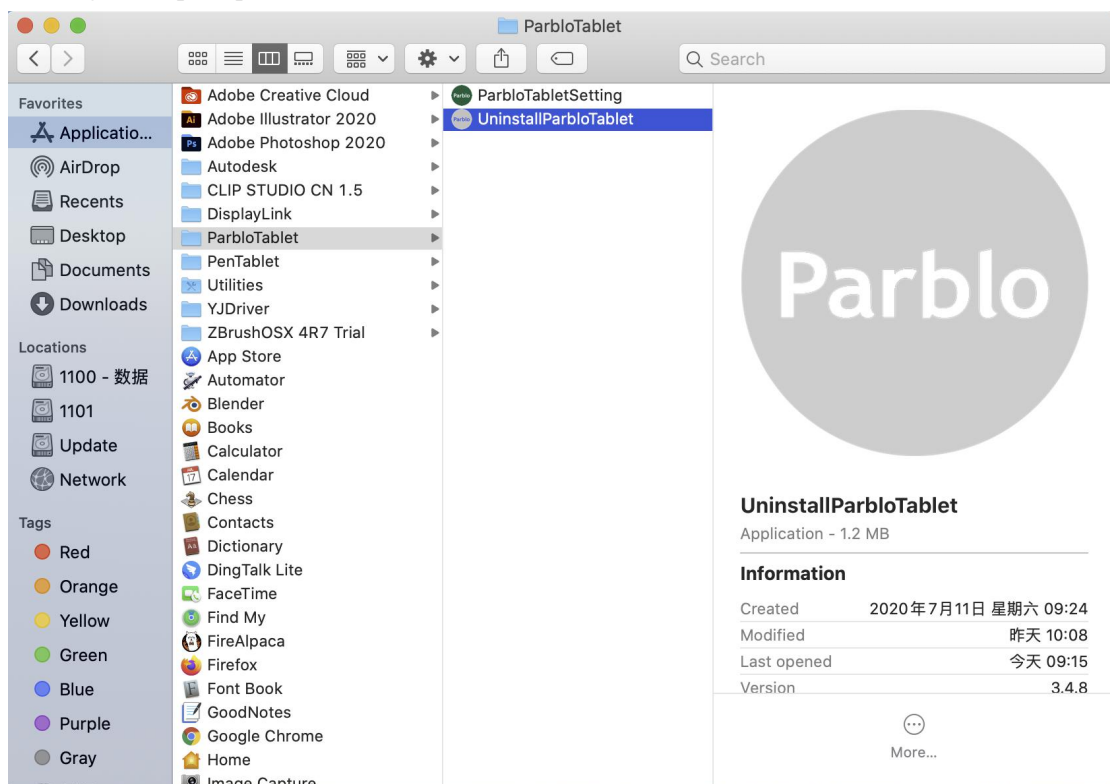


Figure 5-2 Install Mac

VI Frequently Asked Questions and Solutions

1. After installing the driver, it displays "device not connected", what should I do?

- (1) Check whether the connection between the USB cable and the pen display and computer port is loose.
- (2) Check whether the digital pen and the digital screen are within the effective sensing height or whether the cursor moves when touching the screen. If they move, the communication is normal, and go to step 3; if there is no movement, please replace the cable or computer port and try.
- (3) Check whether there are other brands of tablet or pen display drivers in the computer. If so, please uninstall other drivers and the installed Parblo driver and restart the computer.
- (4) Temporarily turn off the computer's anti-virus software and reinstall the pen display driver. After the installation is complete, you can find the icon in the desktop taskbar to open the driver and reconnect.
- (5) If the problem cannot be solved after the above attempts, please contact customer service.

2. The direction is wrong when drawing the line, what should I do if I draw the vertical line horizontally?

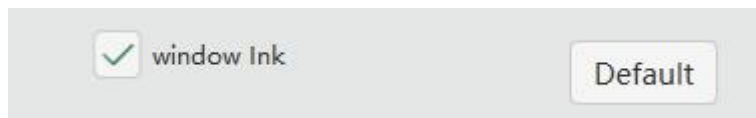
Note: The tablet supports connection with a computer and an Android device. The factory default is the computer mode. To solve the problem of the coordinate direction of the tablet, you can switch between the computer mode and the Android device mode in the following ways.

- (1) Press and hold any two buttons on the tablet at the same time for more than 5 seconds and then release them. At this time, the coordinate mode switching is completed.
- (2) Long press any two buttons again for more than 5 seconds to switch back to the original mode.

3. What should I do if there is no pressure feeling when painting in PS cc?

Take PS cc 2020 as an example:

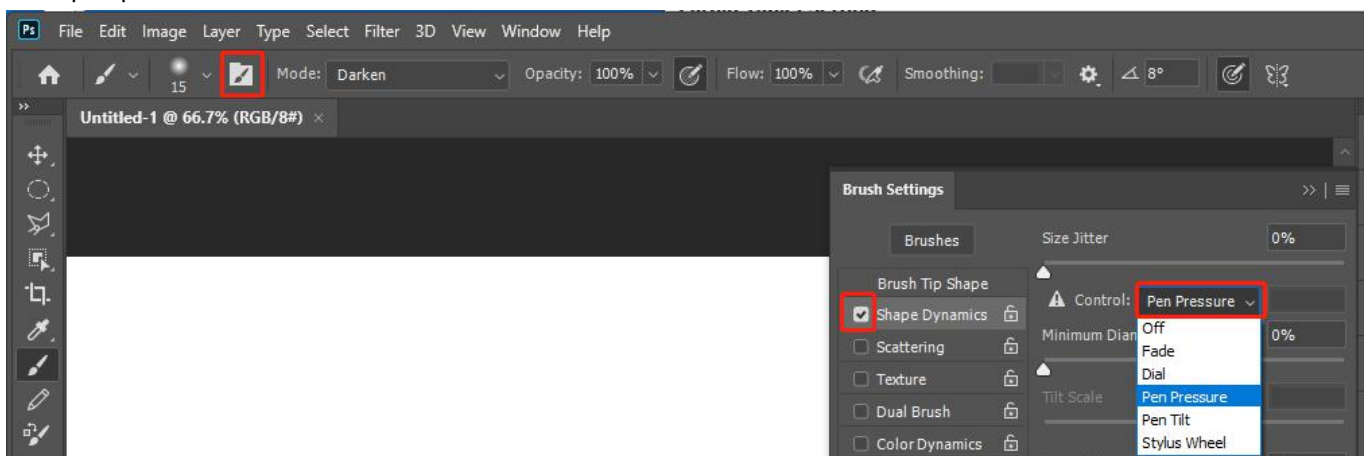
- (1) Check whether the "window Ink" of the driver interface is checked. If it is not checked, check it.



- (2) Make sure that the pressure sensitive setting of Photoshop is turned on.

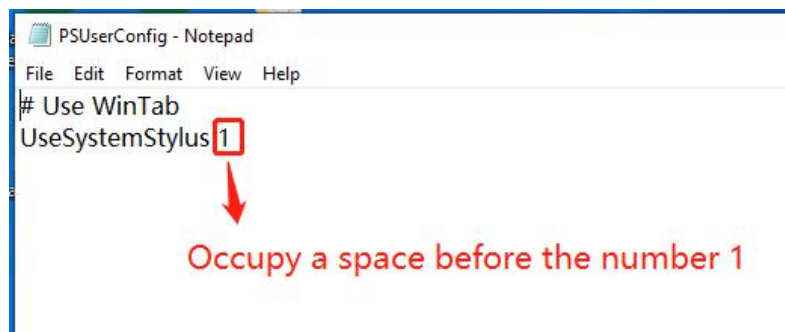


- (3) Select the brush tool, the brush setting window will open, check "shape dynamics", and under the "control" section, select "pen pressure".



- (4) Turn on this computer, and open it in the C drive: Users\ "computer user name" \AppData\Roaming\Adobe\Adobe

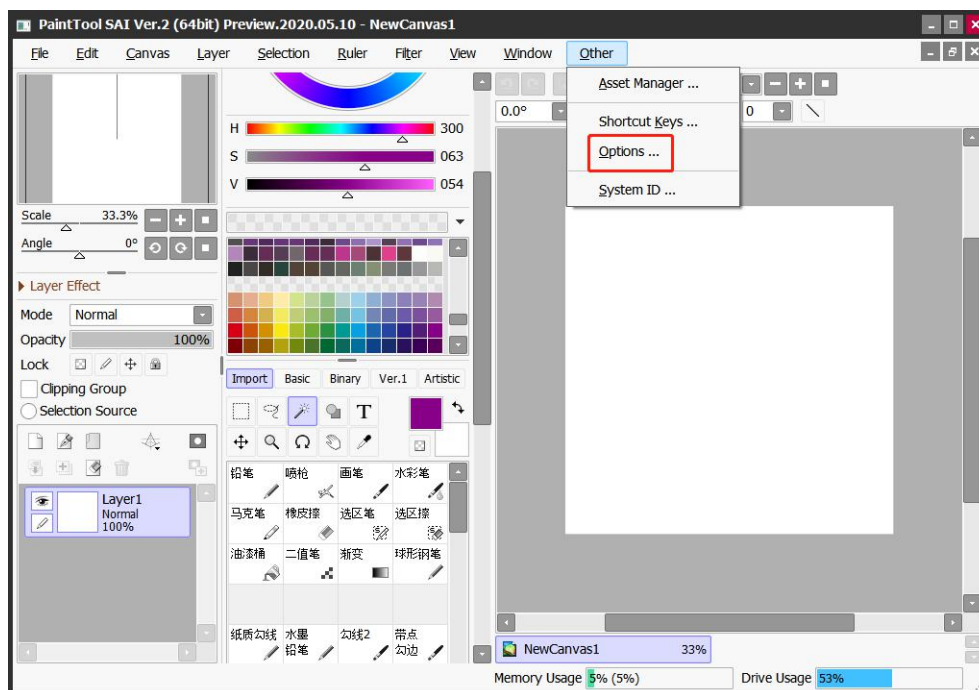
Photoshop 2020\Adobe Photoshop 2020 Settings\PSUserConfig.txt, the following window will pop up, put the number "0" To "1".



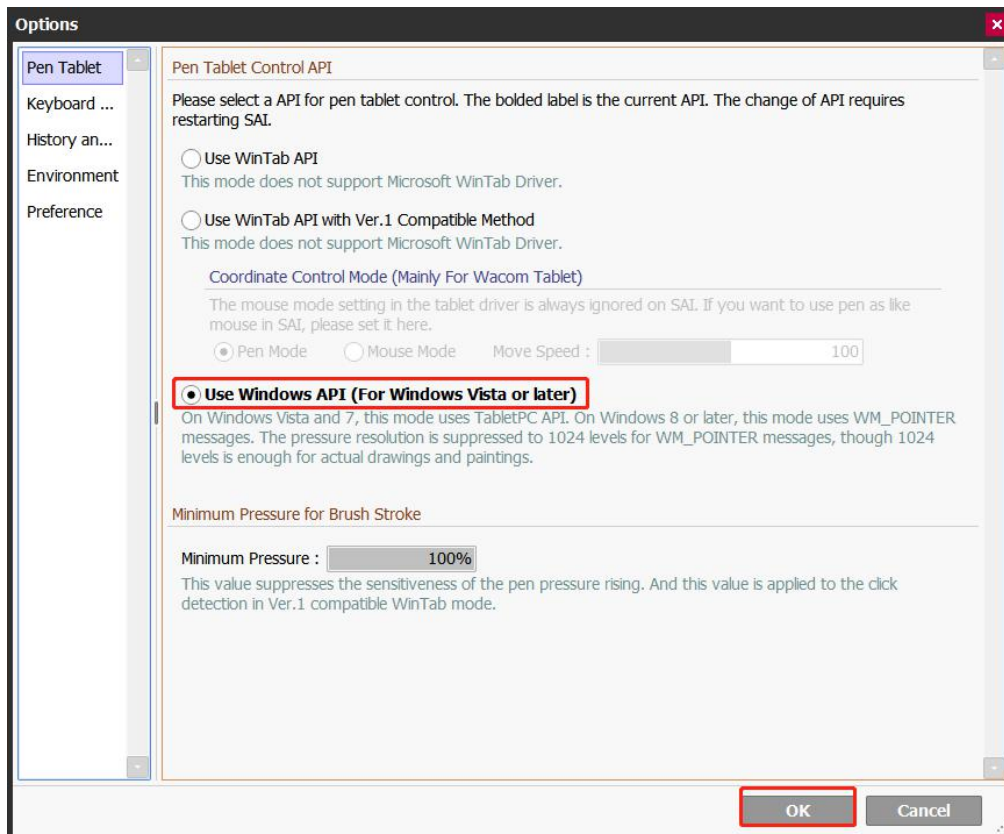
- (5) Restart Photoshop, if there is still no pressure, go to step 6.
- (6) Uninstall and reinstall the driver, and restart the computer.

4. What should I do if there is no pressure in painting in sai2?

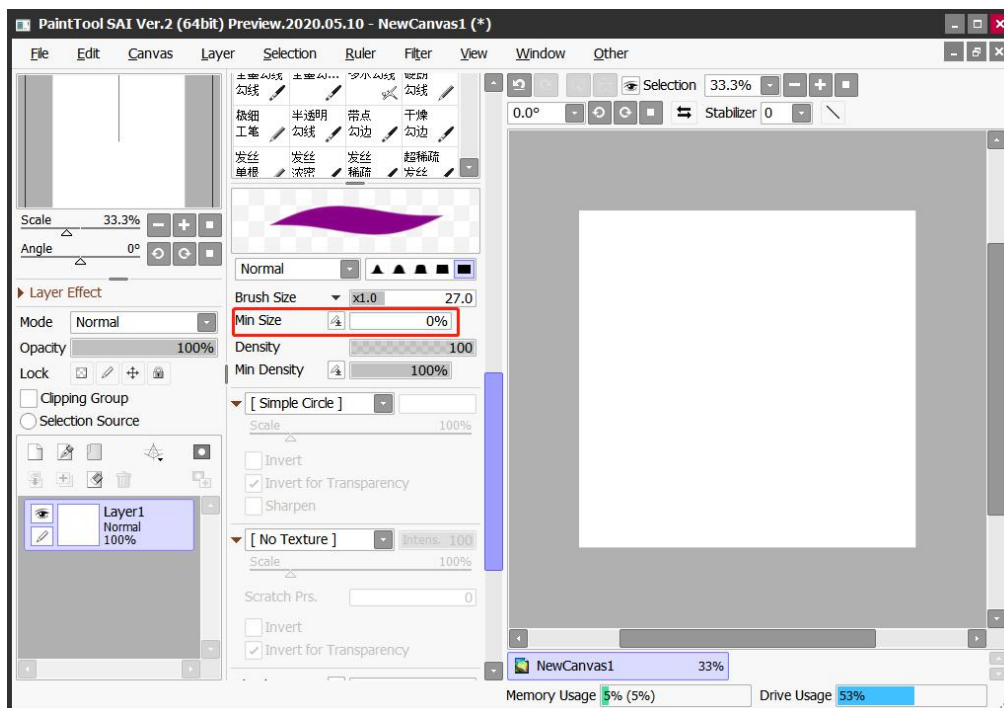
- (1) Open sai 2 and select "Settings" under "Help".



- (2) Check "Use Windows API" and click "OK".



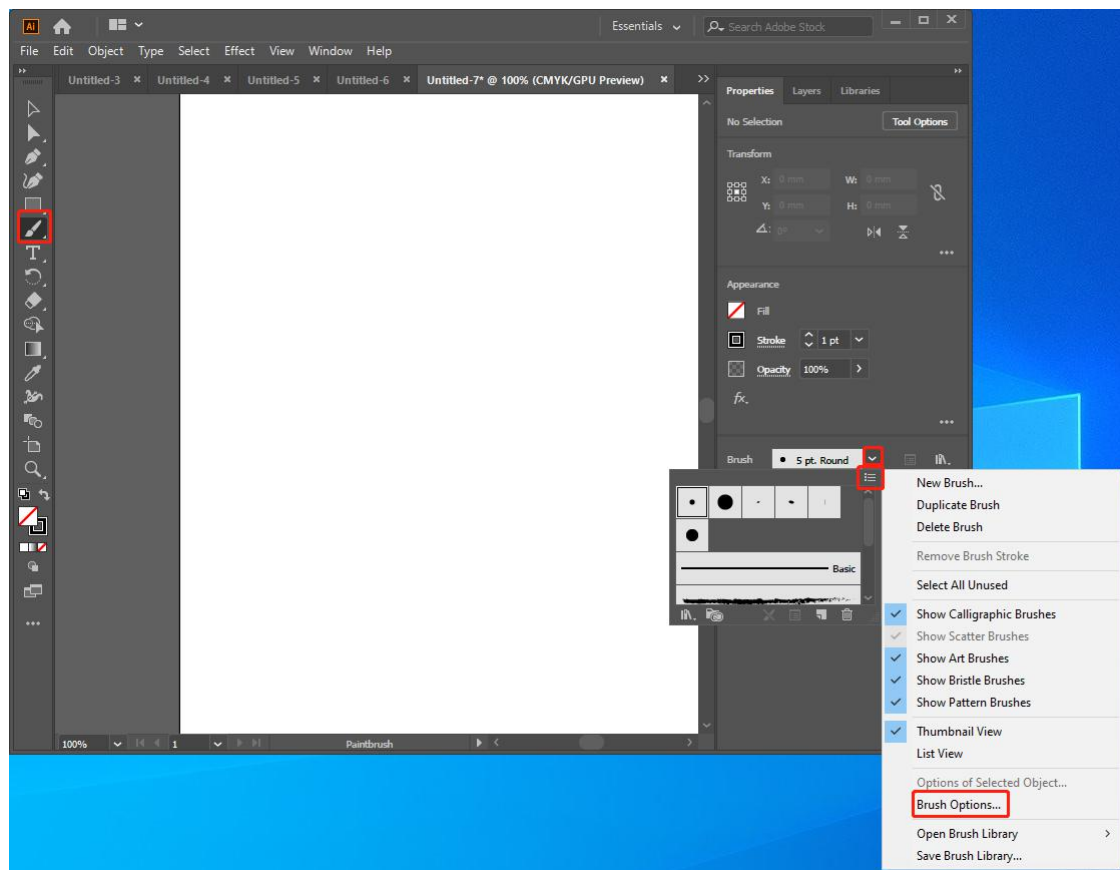
(3) Set the minimum brush size to 0%.



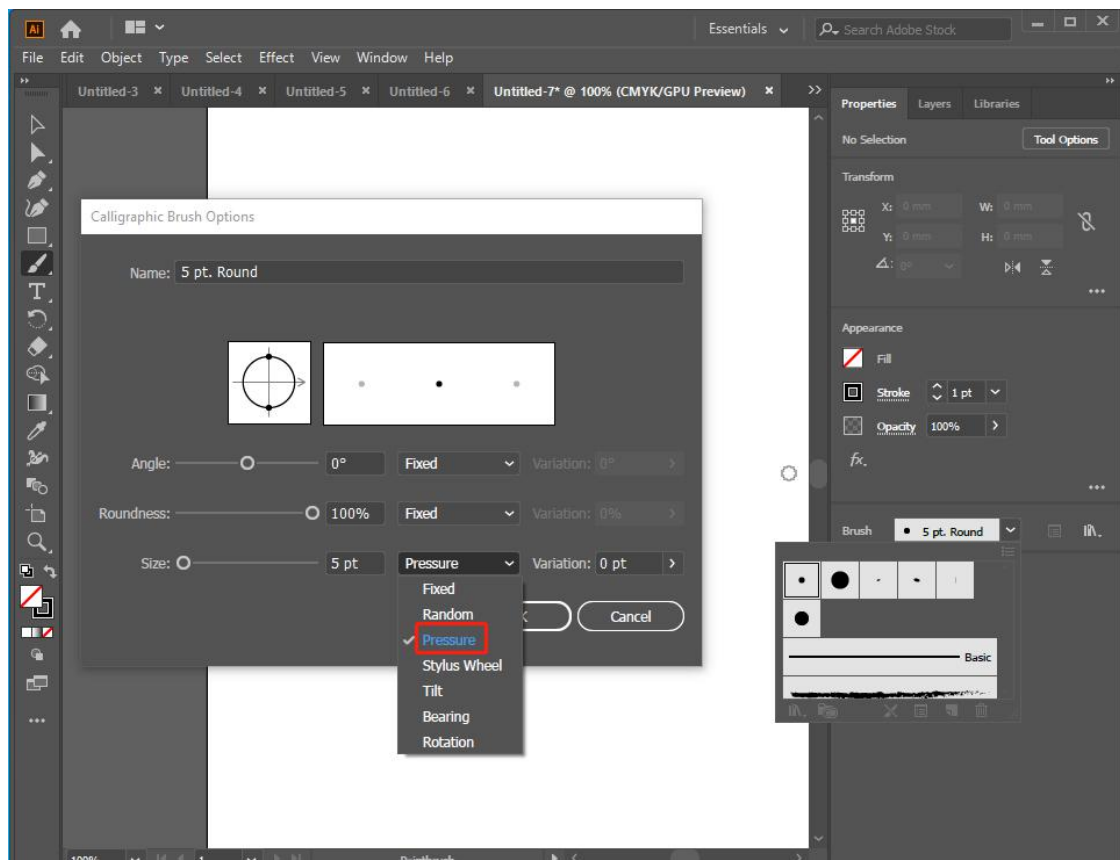
5. What should I do if there is no pressure in painting in AI?

Take AI2020 as an example:

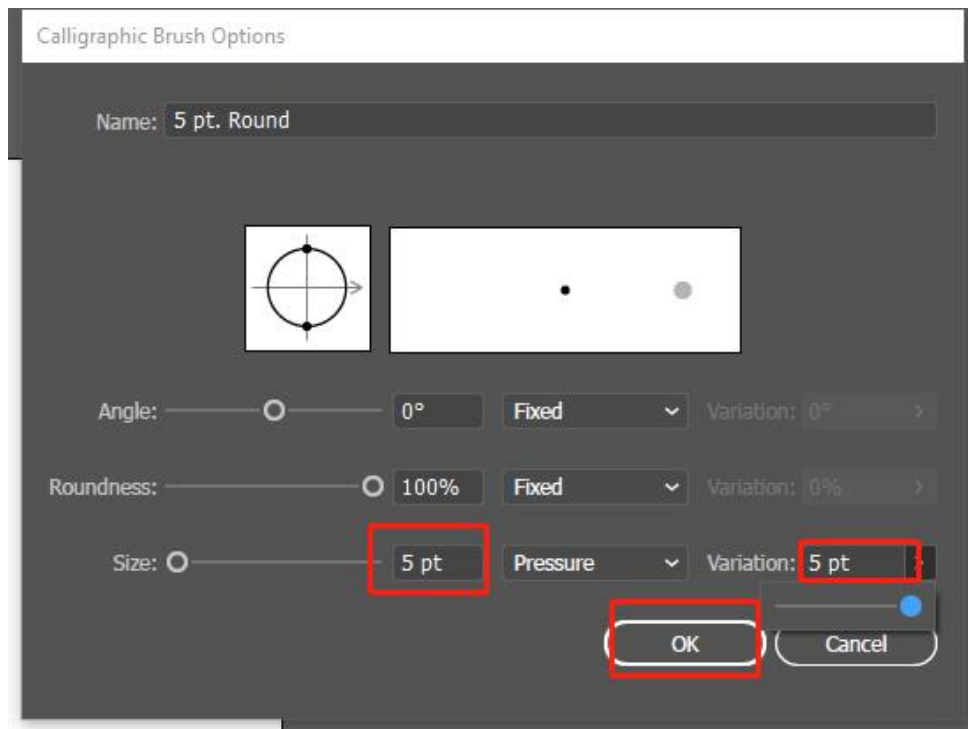
(1) Select the brush tool and open the "brush options" in the brush drop-down list.



(2) In the brush options window, select the brush size as "pressure"



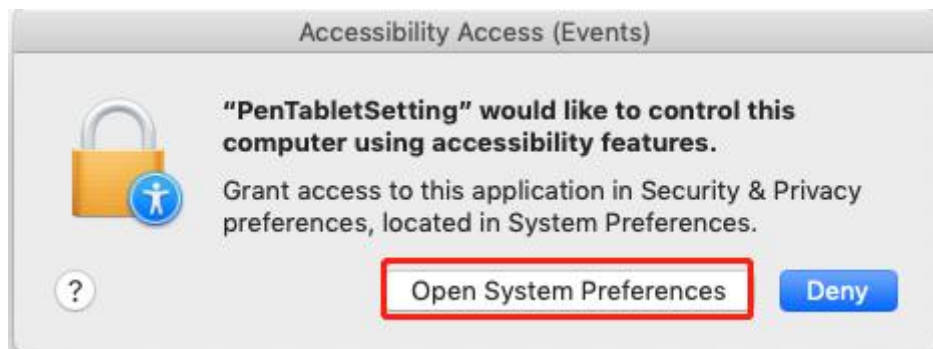
(3) Set the pressure sensitivity variable size equal to the brush size such as "5", click "OK".



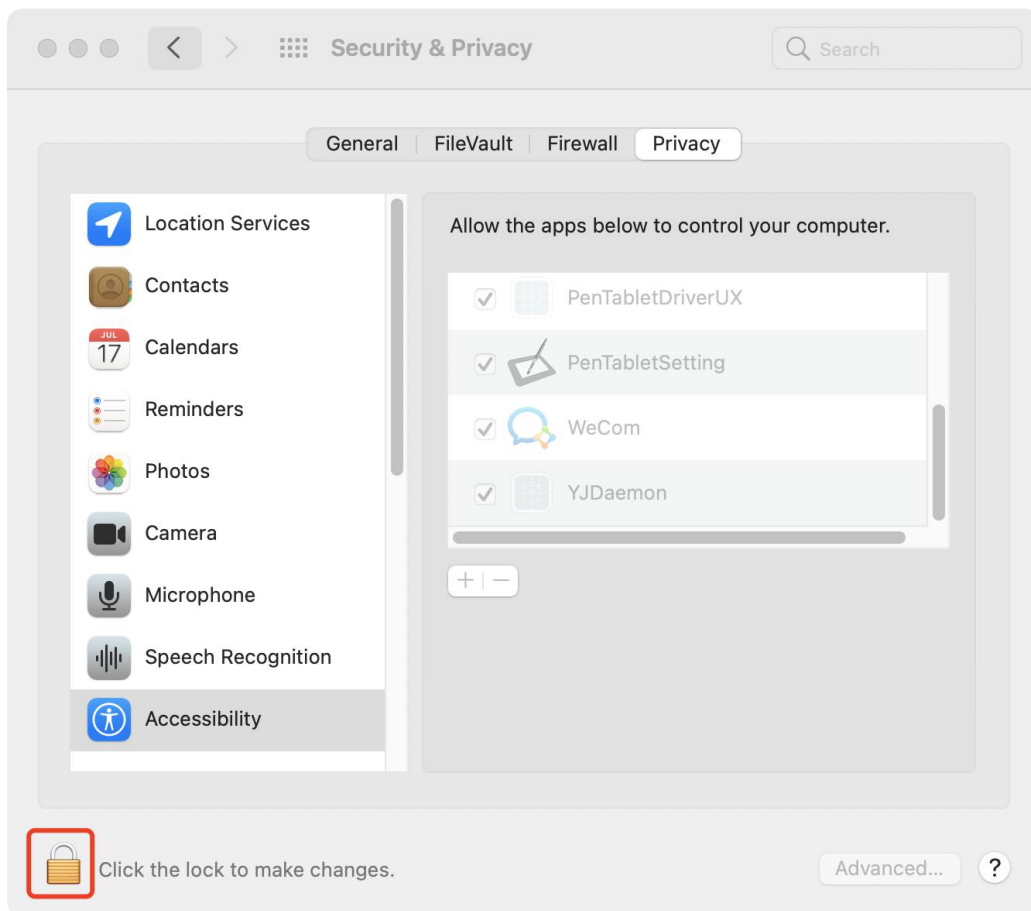
6. How to set up and use Parblo Tablet driver in macOS?

macOS Mojave (10.14) system

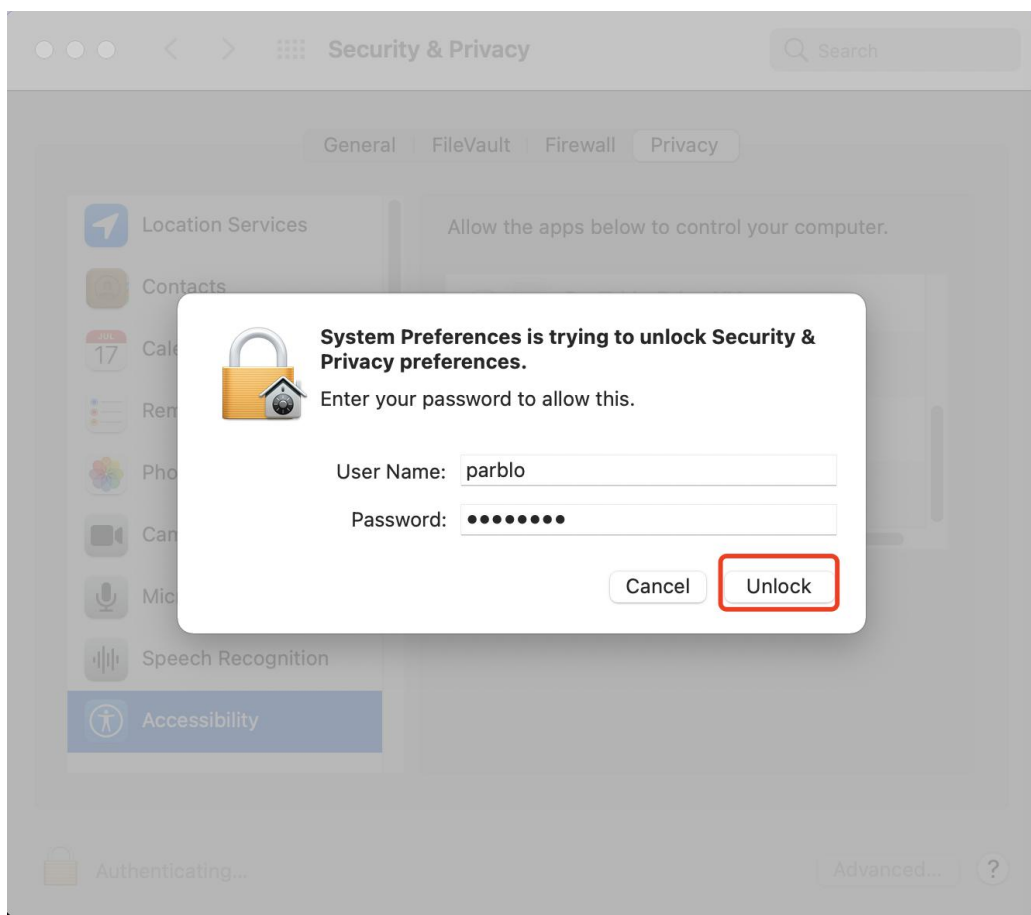
(1) After completing the driver installation, the system will automatically pop up the following prompt when the tablet or screen is recognized for the first time:



(2) Please click the "Open System Preferences" button, and then open "Security and Privacy".

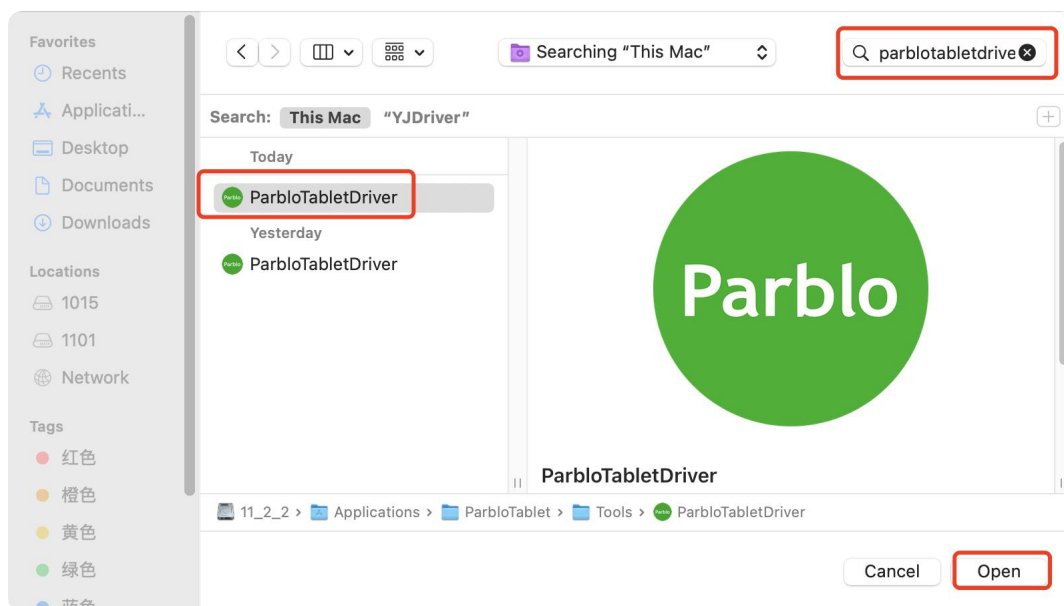
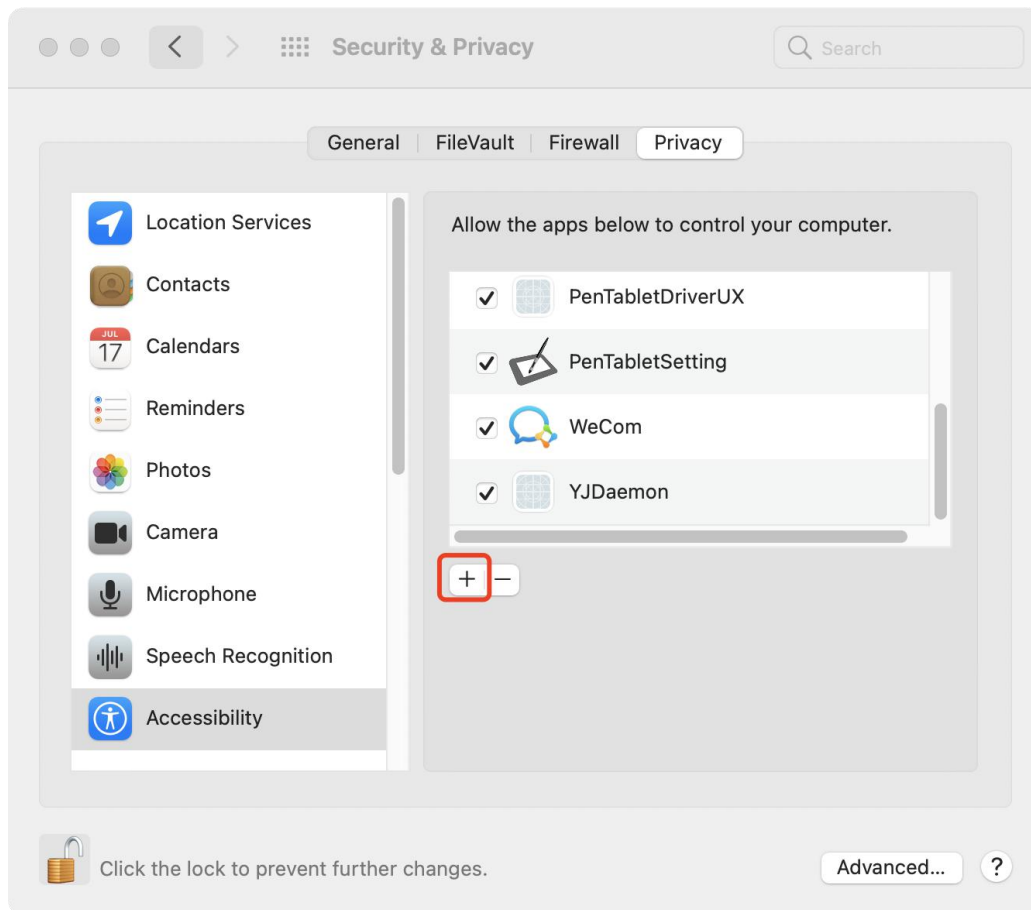


(3) On the "Accessibility" setting, click the "Press Lock" button, and then enter the administrator password system for authorization.

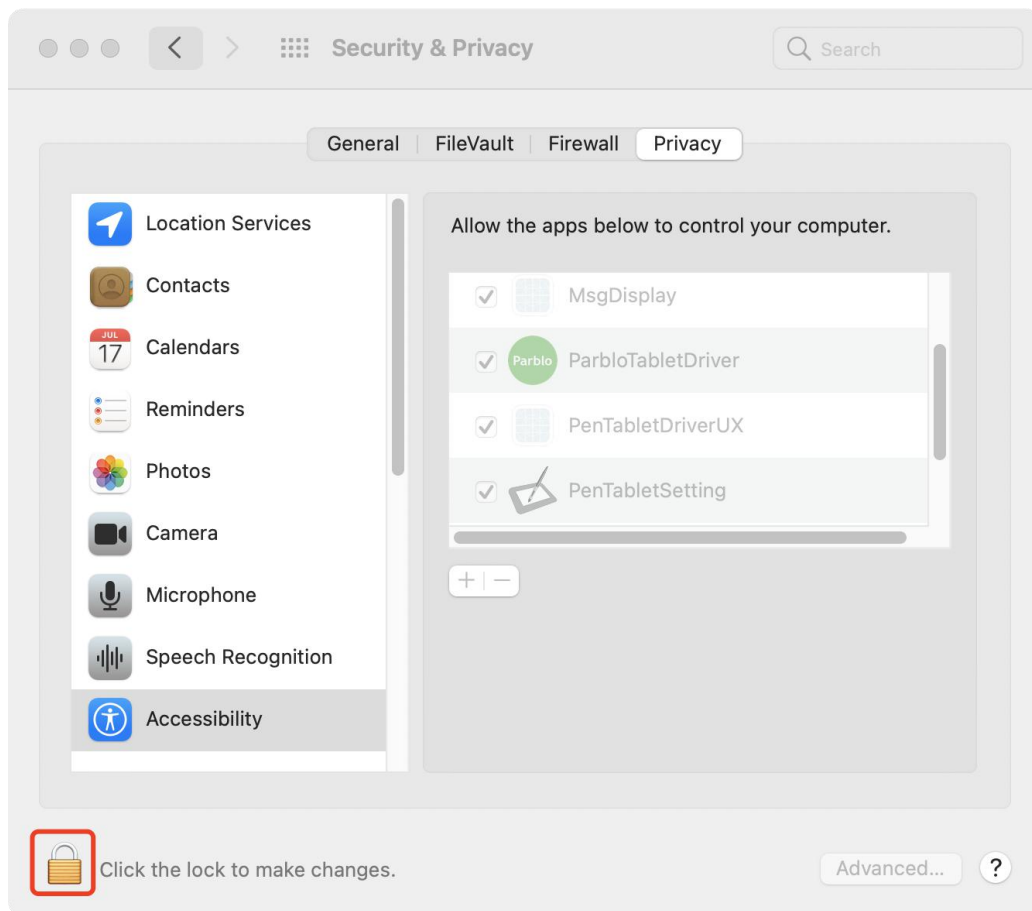


(4) Please click the "+" button, search for "ParbloTabletDriver" in the search box, select "ParbloTabletDriver", and

then click the "Open" button.



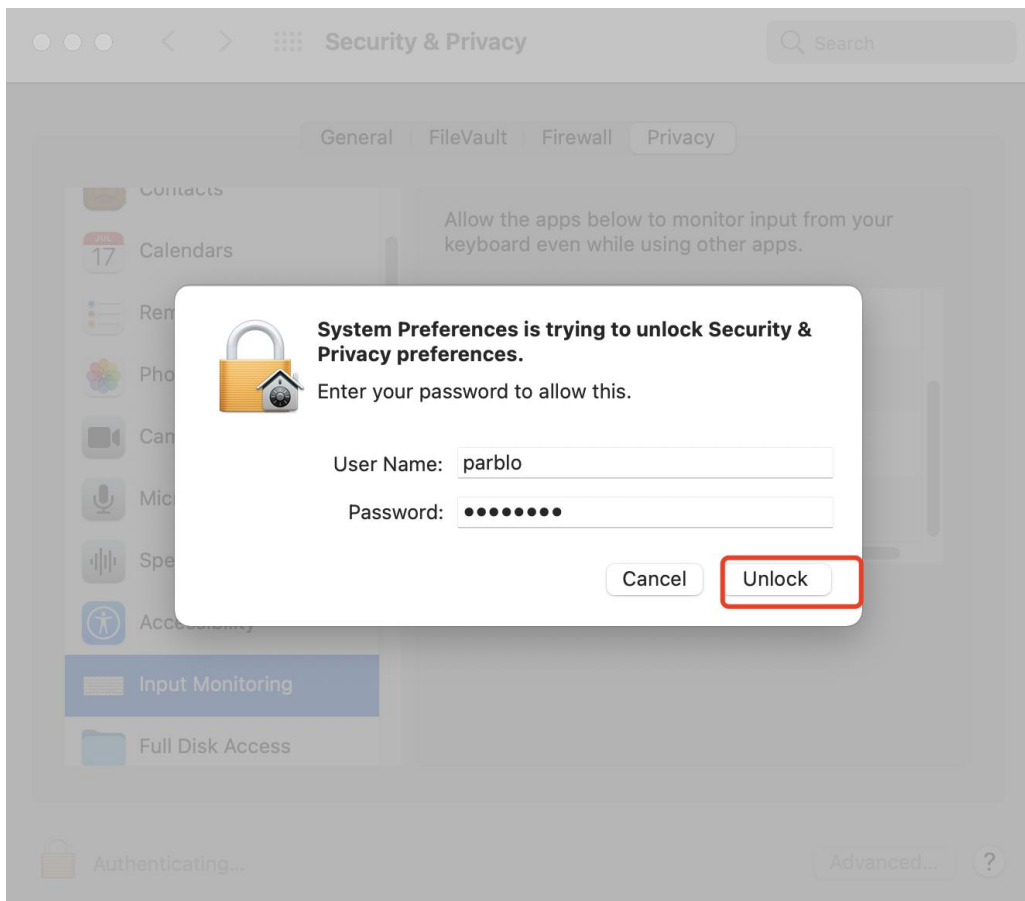
(5) Please click the "press lock" button to lock.



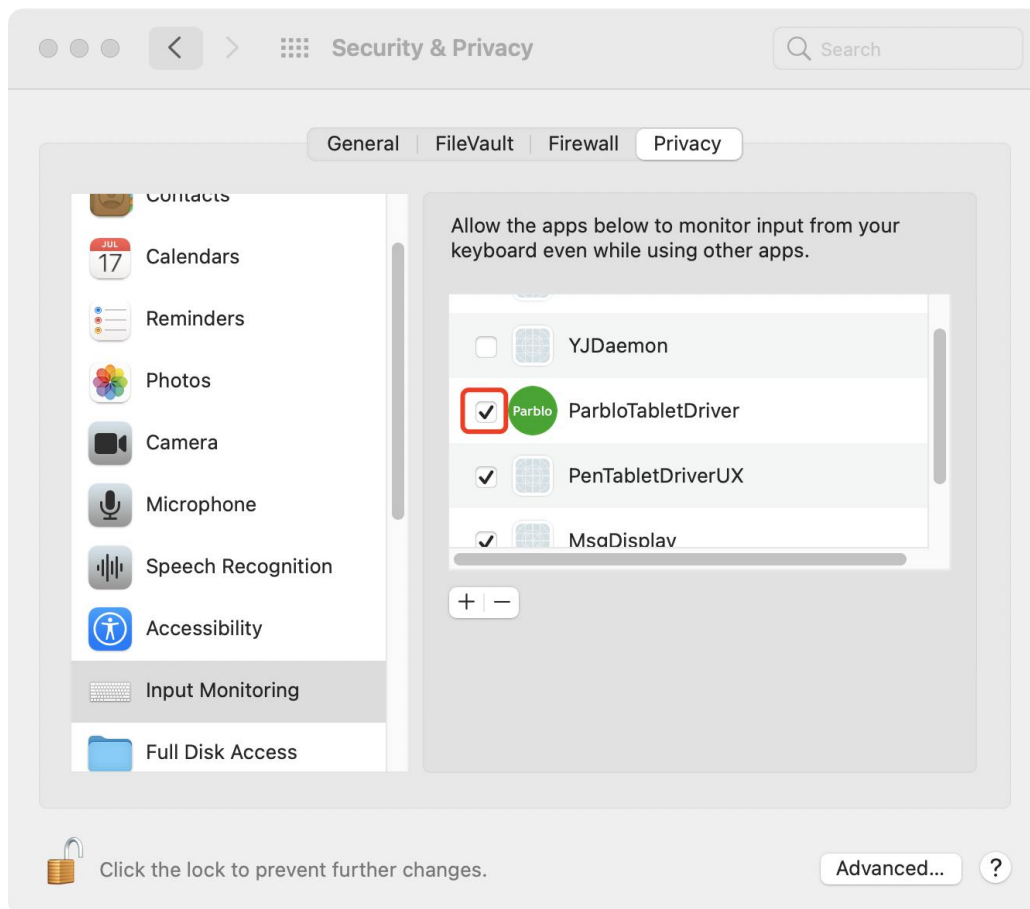
(6) Turn off "Security and Privacy" and restart the system. When the system enters the desktop, open "ParbloTabletSetting" on the launchpad to use it.

macOS Catalina (10.15) and higher

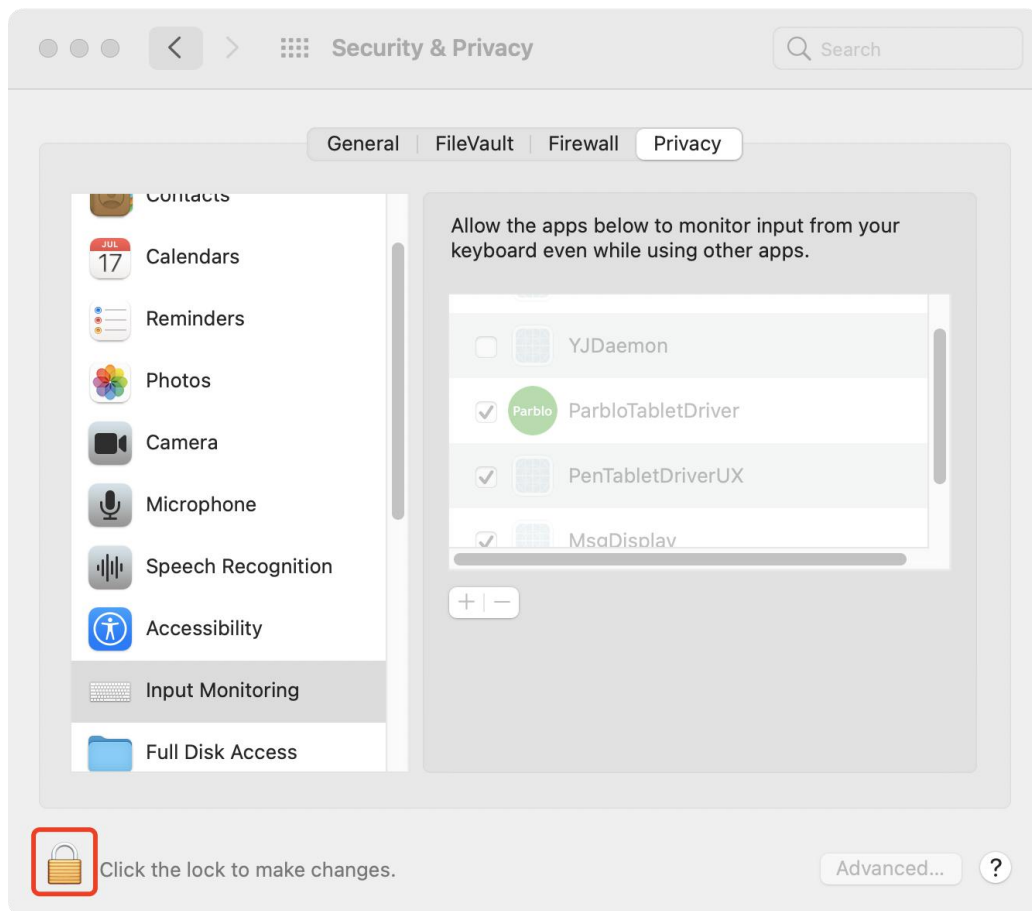
(1) After completing the driver installation, first set the permissions of the same "macOS Mojave (10.14) system" as above, and then on the "input monitoring" setting, click the "press lock" button to enter the administrator password system for authorization.



(2) Please select "ParbloTabletDriver".



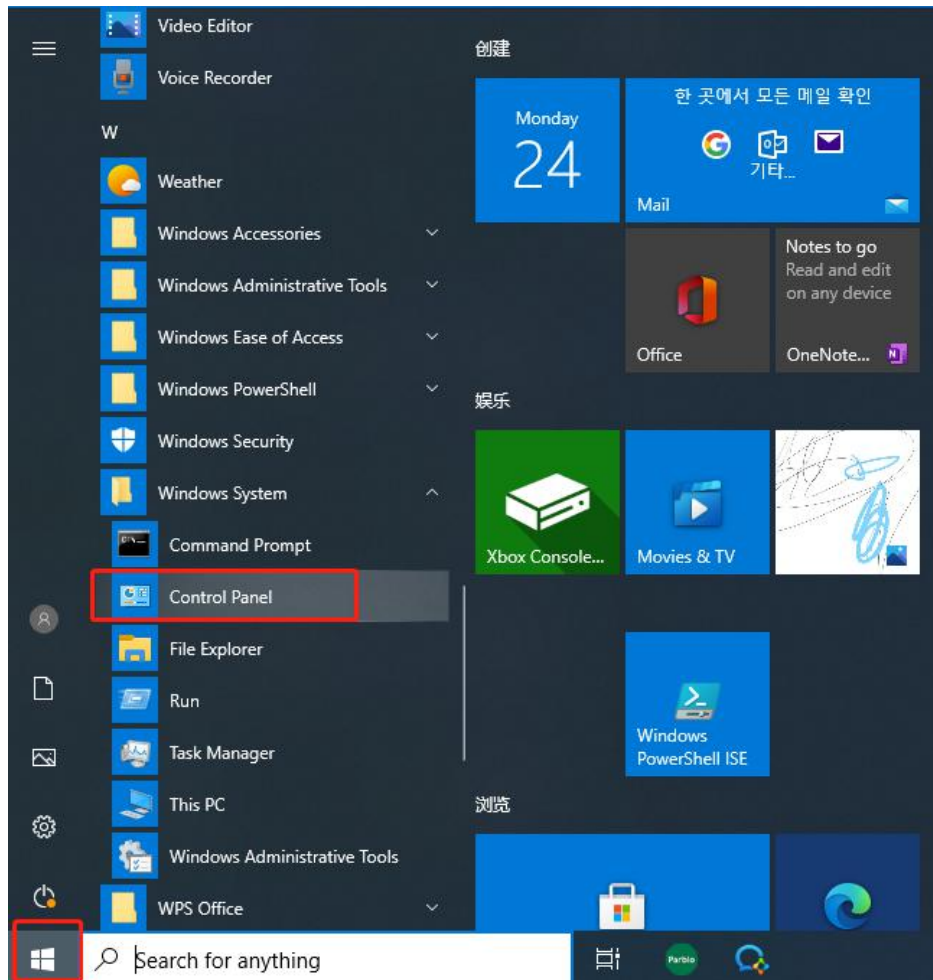
(3) Please click the "press lock" button to lock.



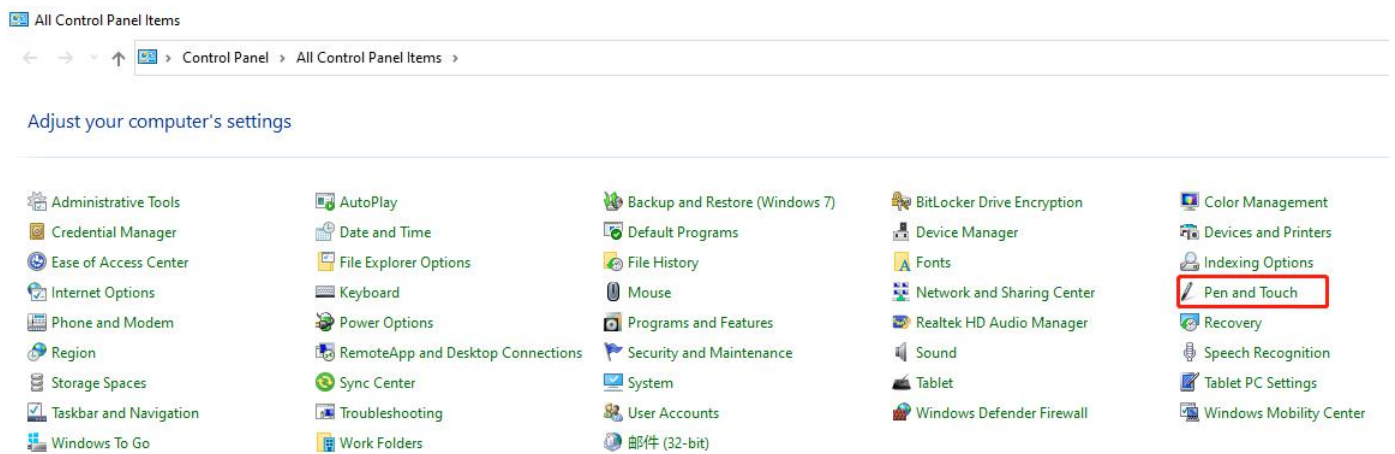
(4) Turn off "Security and Privacy" and restart the system. When the system enters the desktop, open "ParbloTabletSetting" on the launchpad to use it.

7. How to solve the problem that the white circle can't be drawn or the right button pops out after the pen is long pressed?

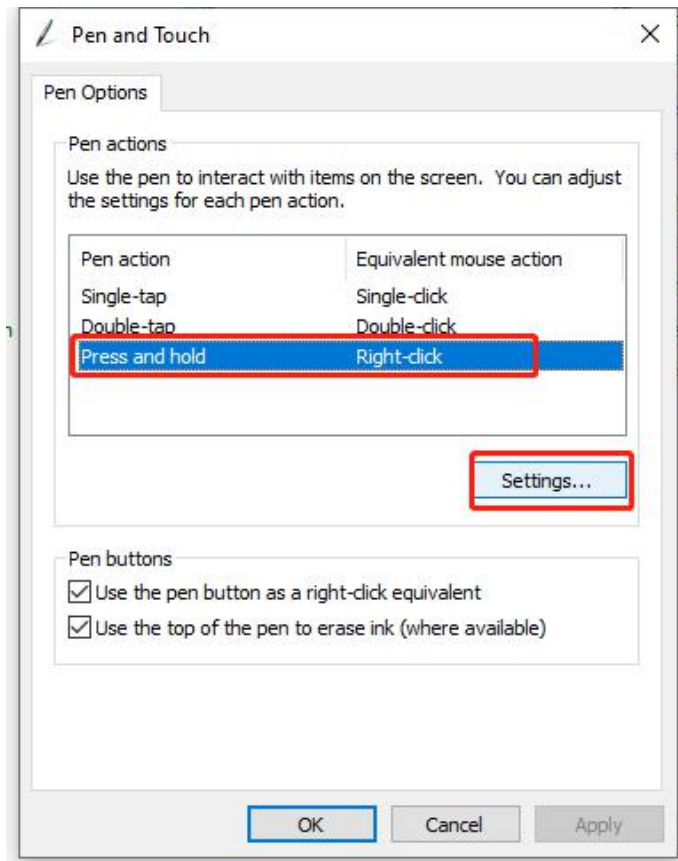
(1) Find the "Control Panel" on your computer.



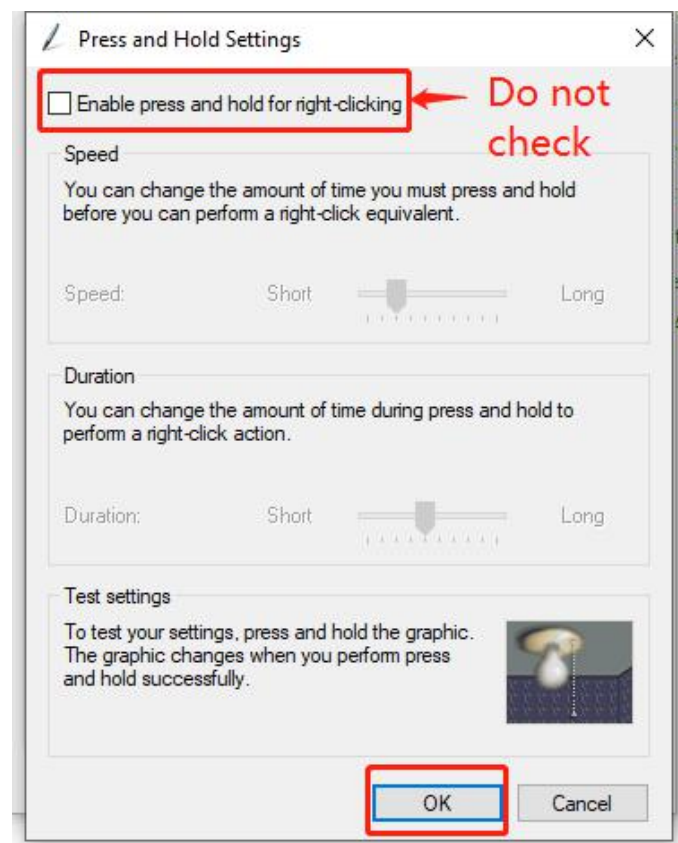
(2) Find "Pen and Touch" in "Control Panel" and open it.

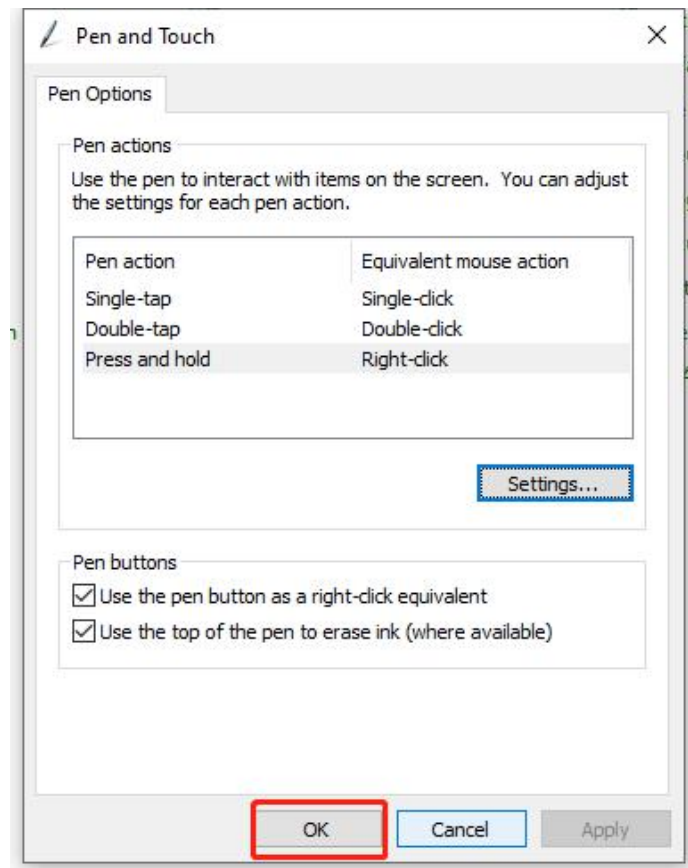


(3) Click "Long press, right-click", and then click "Settings" to open the long press setting window.



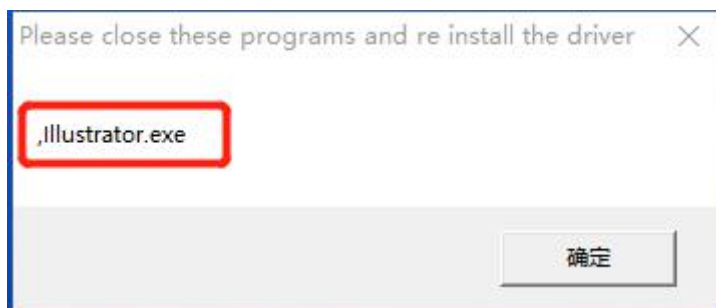
(4) Do not check "Use long press as right-click" and click "OK" twice.



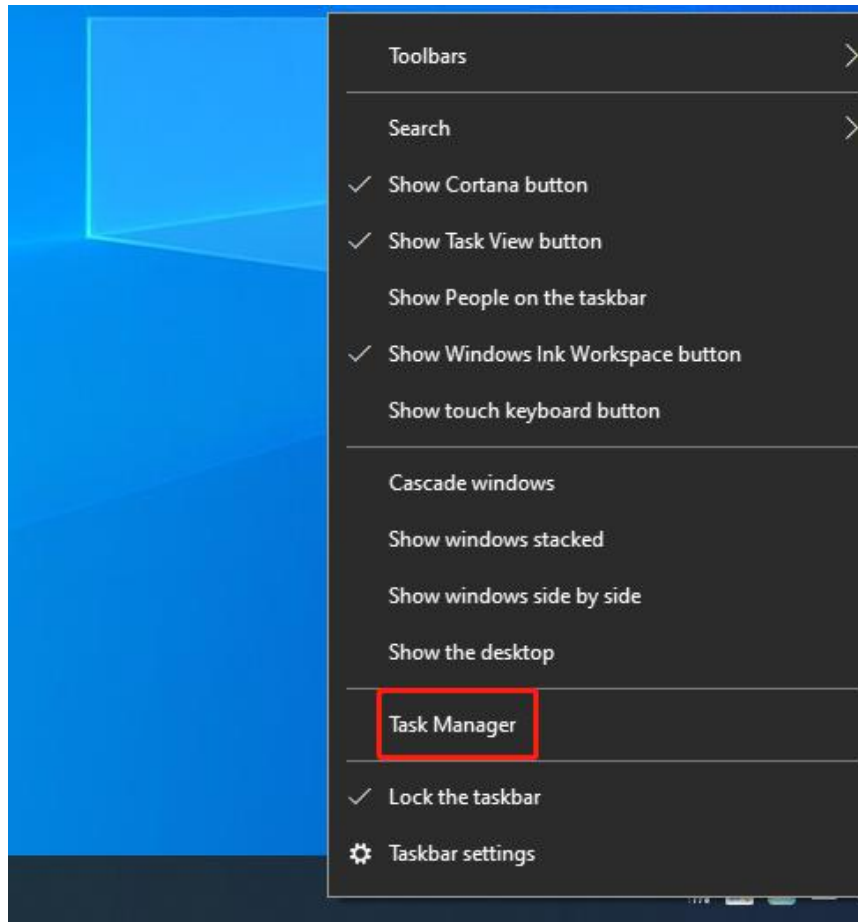


8. How to solve the driver installation error?

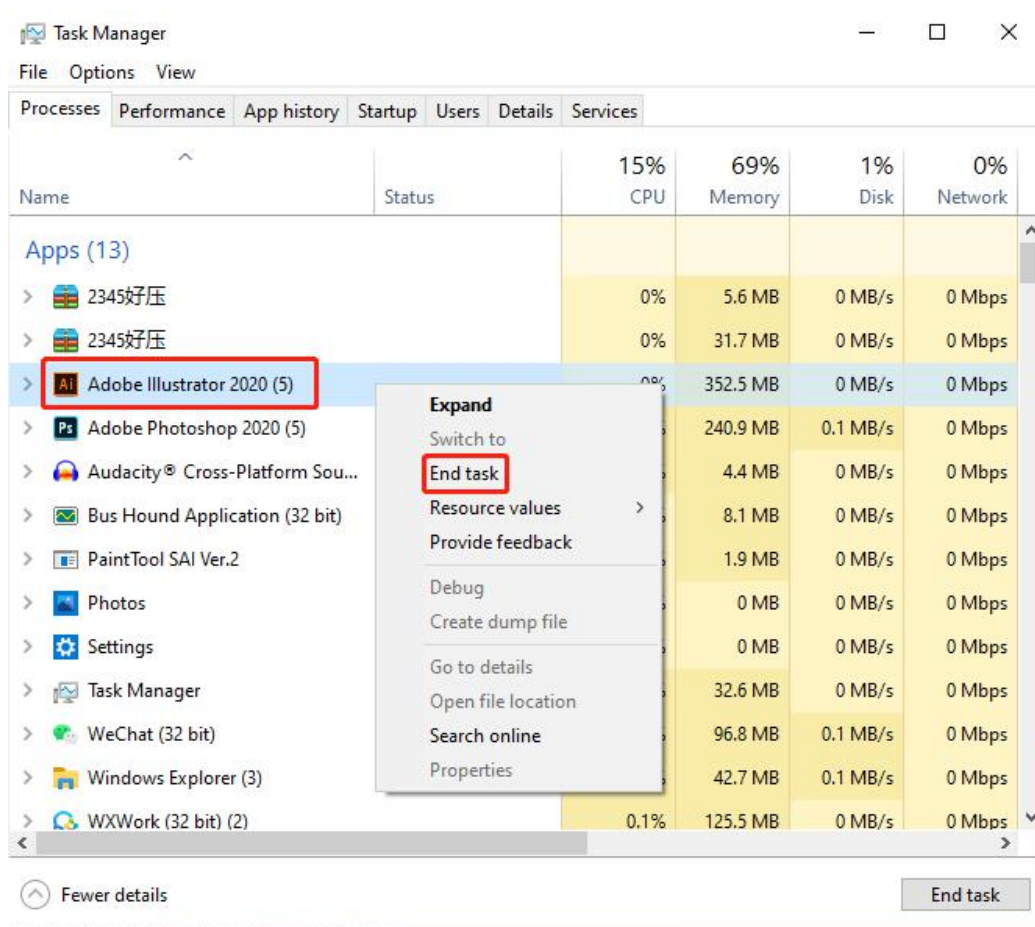
If you are running on the Windows operating system and you receive the following error message when you double-click the "driver" to install, please try the following steps: (Please note: all the prompts that appear "Please close these programs and re install the driver+ process" can be used A similar method ends the process that appears)



1. Right-click the taskbar to open the "Task Manager".



2. Find the process that appears in the prompt box, right-click and select "End Task".



3. Reinstall the driver.

Note: Before installing the driver, please turn off all anti-virus software and uninstall all other pen tablet or pen display drivers from the computer and restart the computer.